

LOCATION #1 - 1/11/2012 7:52:00 - 18:55:32

Event Report: Monitor Log

Start Time	End Time	Status
-----	-----	SERIAL NUMBER: BE17070
Jan 11/12 07:52:06		Start Monitoring Trigger Level: Geo: 0.01000 in/s
Jan 11/12 12:26:46	Jan 11/12 12:26:51	Event recorded. Trigger Level Long: 0.01000 in/s
Jan 11/12 12:26:51		Start Monitoring Trigger Level: Geo: 0.01000 in/s
Jan 11/12 12:45:05	Jan 11/12 12:45:10	Event recorded. Trigger Level Long: 0.01000 in/s
Jan 11/12 12:45:10		Start Monitoring Trigger Level: Geo: 0.01000 in/s
Jan 11/12 18:53:56	Jan 11/12 18:54:01	Event recorded. Trigger Level Tran: 0.01000 in/s
Jan 11/12 18:54:01	Jan 11/12 18:55:32	No events recorded. (Keyboard Exit) Geo: 0.01000 in/s

TVIC 221, STAGE 5  
9:09:17 - 10:13:44  
NO EVENTS

3 HMC INDUCED EVENTS (UNINTENTIONAL)

TVIC 3254, STAGE 6  
17:29:59 - 18:13:57  
NO EVENTS

PXP TVIC 221 & TVIC 3254  
 Location #1  
 1/11/12 - 7:52:06 - 18:55:32

Event Report: Event List - p:\petroleum\plains exploration & production (pxp)\tvic 221 & tvic 3254\data\tvic1.1.11b

Type	Serial No.	Date/Time	No. Chan	Trigger	Tran Peak (in/s)	Vert Peak (in/s)	Long Peak (in/s)	Mic Peak (dB)	PVS1 (in/s)	Description
LQG	BE17070	Jan 11 /12 07:52:06	***	***	***	***	***	***	***	Start Monitoring
W	BE17070	Jan 11 /12 12:26:46	3	Long	0.00750	0.00500	0.0206	***	0.0210	PXP
W	BE17070	Jan 11 /12 12:45:05	3	Long	0.00875	0.00437	0.0119	***	0.0145	PXP
W	BE17070	Jan 11 /12 18:53:56	3	Tran	0.0306	0.00750	0.0331	***	0.0447	PXP - SHM INDUCED EVENTS (UNINTENTIONAL)
LOG	BE17070	Jan 11 /12 18:55:32	***	***	***	***	***	***	***	Keyboard Stop

TVIC 221, STAGE 5  
 9:09:17-10:13:44  
 NO EVENTS

TVIC 3254, STAGE 6  
 17:29:59-18:13:57  
 NO EVENTS

**Date/Time** Long at 12:26:46 January 11, 2012  
**Trigger Source** Geo: 0.01000 in/s  
**Range** Geo: 1.25 in/s  
**Record Time** 5.0 sec at 1024 sps

**Serial Number** BE17070 V 10.06-8.17 MiniMate Plus  
**Battery Level** 6.2 Volts  
**Unit Calibration** May 6, 2011 by InstanTel inc.  
**File Name** S070E3SL.8M0

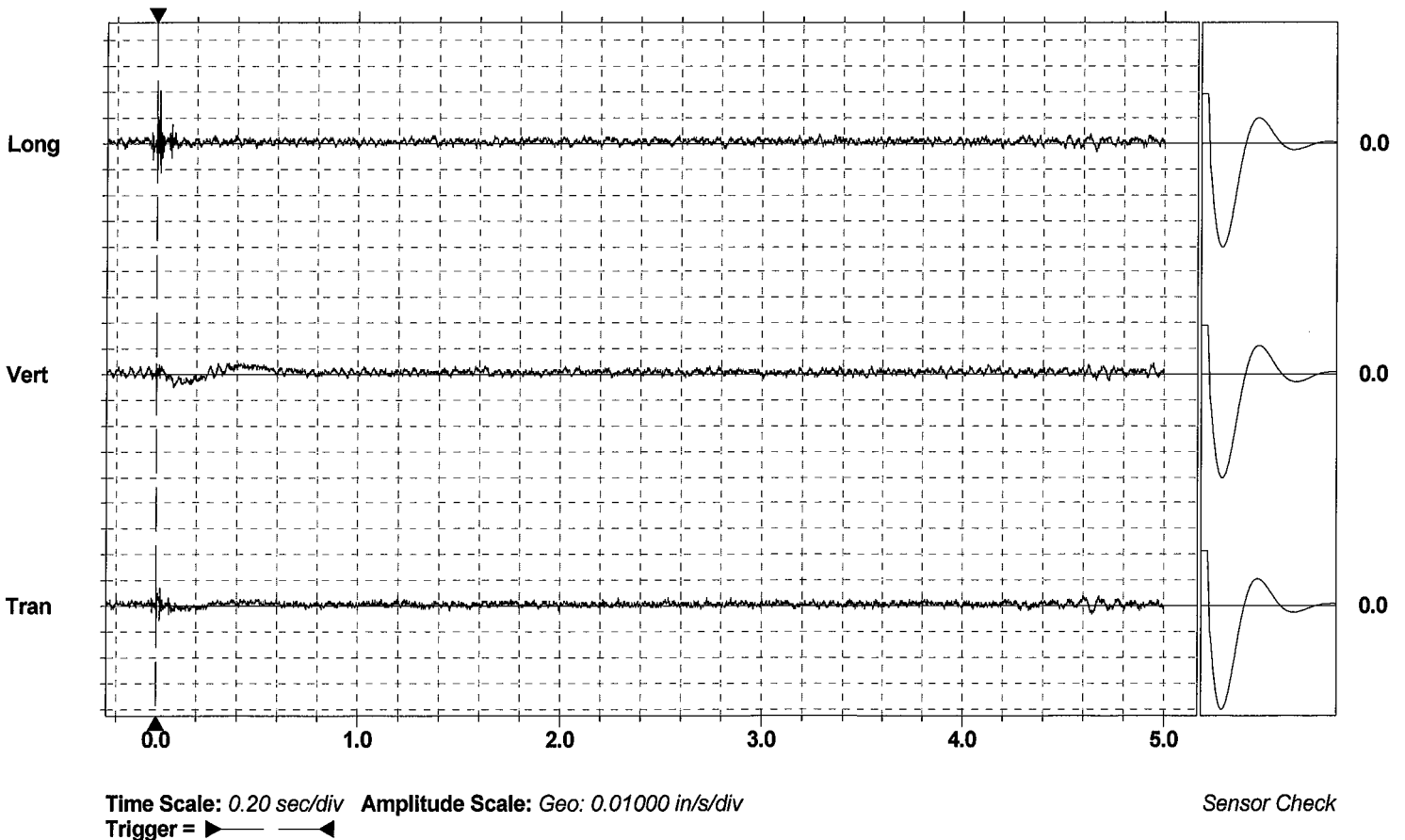
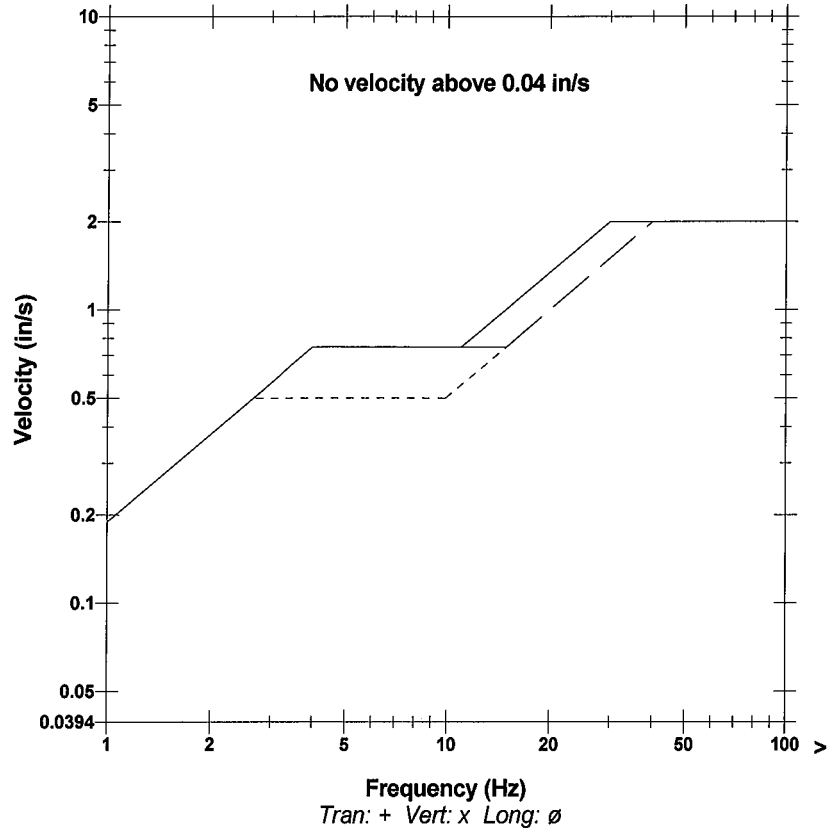
**Notes**

**Client:** PXP  
**Project:** TVIC 221 & TVIC 3254  
**Location:** Inglewood Field - Los Angeles, CA  
**User:** MMC, Inc. - Mark Burgus

**Extended Notes:**

	Tran	Vert	Long	
PPV	0.00750	0.00500	0.0206	in/s
ZC Freq	>100	14	>100	Hz
Time (Rel. to Trig)	0.001	0.086	0.016	sec
Peak Acceleration	0.0182	0.0133	0.0398	g
Peak Displacement	0.00005	0.00035	0.00004	in
Sensor Check	Passed	Passed	Passed	
Frequency	7.7	7.6	7.6	Hz
Overswing Ratio	3.9	3.7	4.1	

**USBM RI8507 And OSMRE**



**Date/Time** Long at 12:45:05 January 11, 2012  
**Trigger Source** Geo: 0.01000 in/s  
**Range** Geo: 1.25 in/s  
**Record Time** 5.0 sec at 1024 sps

**Serial Number** BE17070 V 10.06-8.17 MiniMate Plus  
**Battery Level** 6.2 Volts  
**Unit Calibration** May 6, 2011 by InstanTel inc.  
**File Name** S070E3SM.350

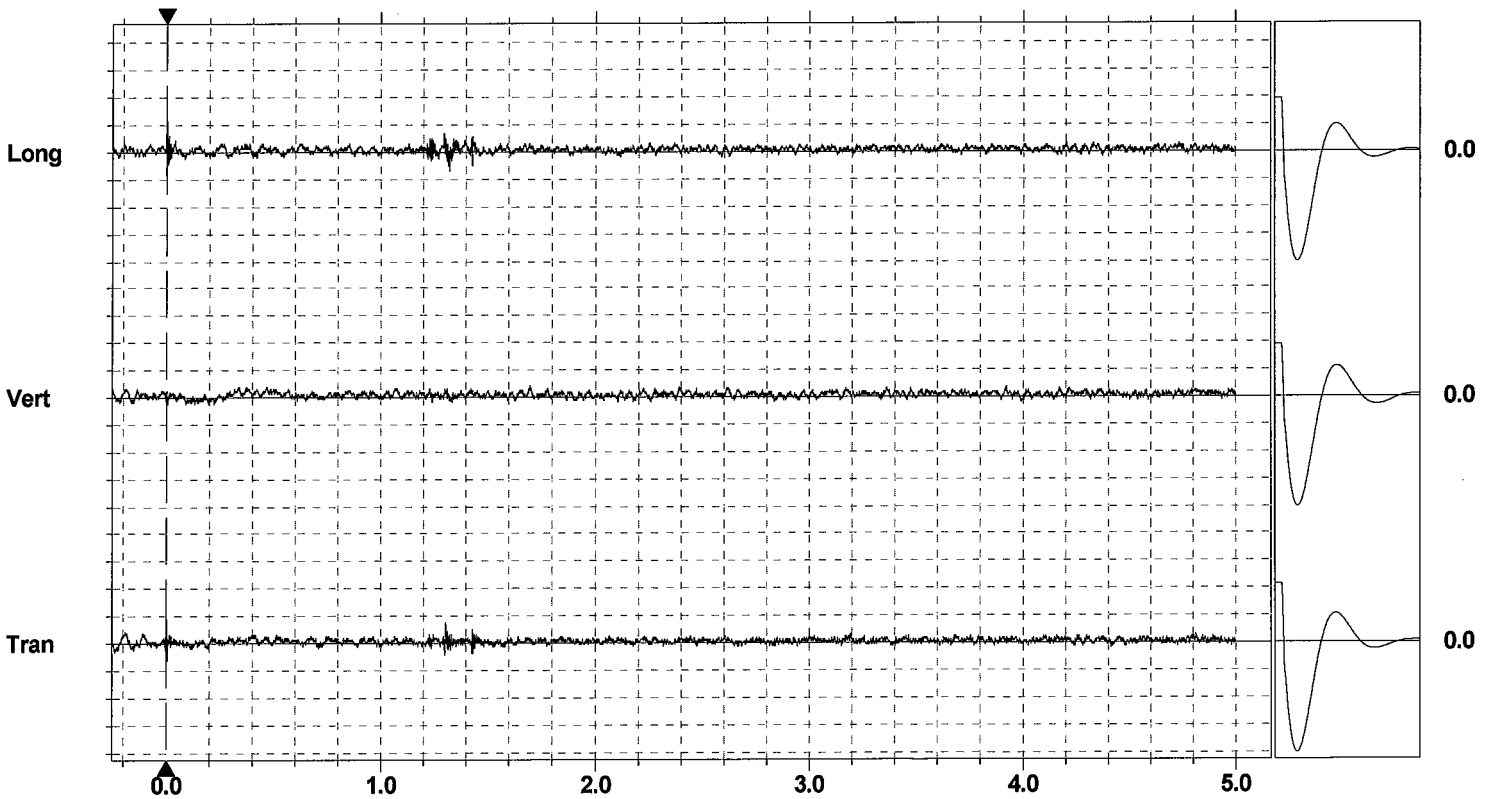
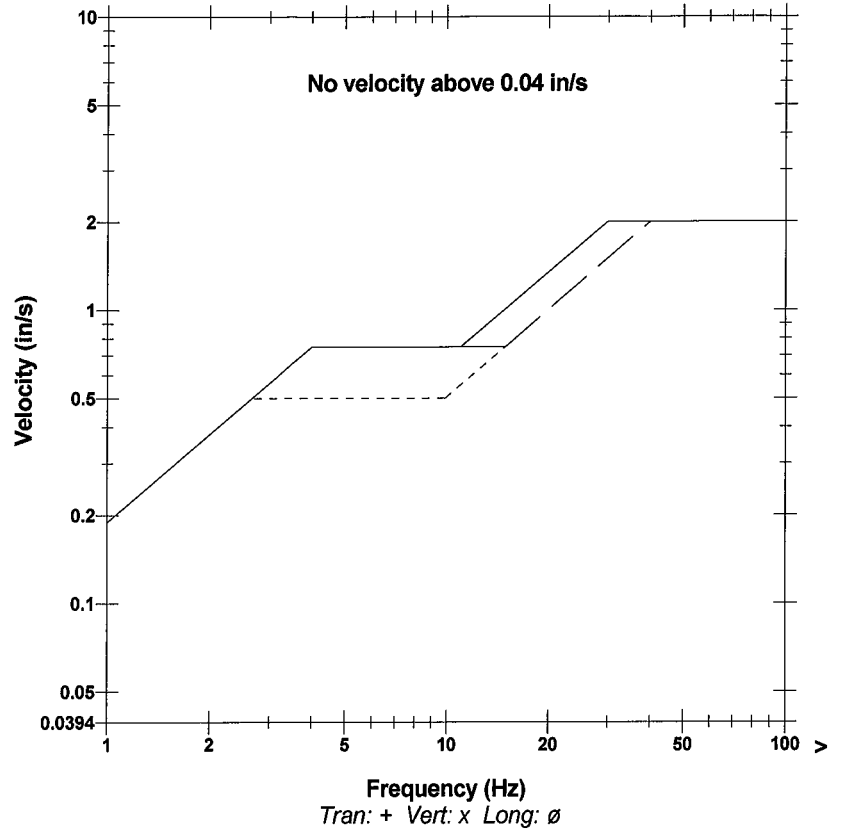
**Notes**

**Client:** PXP  
**Project:** TVIC 221 & TVIC 3254  
**Location:** Inglewood Field - Los Angeles, CA  
**User:** MMC, Inc. - Mark Burgus

**Extended Notes:**

	Tran	Vert	Long	
PPV	0.00875	0.00437	0.0119	in/s
ZC Freq	>100	22	>100	Hz
Time (Rel. to Trig)	0.002	1.698	0.000	sec
Peak Acceleration	0.0232	0.00663	0.0365	g
Peak Displacement	0.00004	0.00009	0.00005	in
Sensor Check	Passed	Passed	Passed	
Frequency	7.7	7.6	7.6	Hz
Overswing Ratio	3.9	3.7	4.1	

**USBM RI8507 And OSMRE**



**Time Scale:** 0.20 sec/div **Amplitude Scale:** Geo: 0.01000 in/s/div  
**Trigger =**

Sensor Check

**Date/Time** Tran at 18:53:56 January 11, 2012  
**Trigger Source** Geo: 0.01000 in/s  
**Range** Geo: 1.25 in/s  
**Record Time** 5.0 sec at 1024 sps

**Serial Number** BE17070 V 10.06-8.17 MiniMate Plus  
**Battery Level** 6.2 Volts  
**Unit Calibration** May 6, 2011 by InstanTel inc.  
**File Name** S070E3T3.5W0

**Notes**

**Client:** PXP  
**Project:** TVIC 221 & TVIC 3254  
**Location:** Inglewood Field - Los Angeles, CA  
**User:** MMC, Inc. - Mark Burgus

**Extended Notes:**

	Tran	Vert	Long	
PPV	0.0306	0.00750	0.0331	in/s
ZC Freq	>100	2.3	>100	Hz
Time (Rel. to Trig)	0.010	0.096	0.009	sec
Peak Acceleration	0.0530	0.00829	0.0613	g
Peak Displacement	0.00026	0.00053	0.00004	in
Sensor Check	Passed	Passed	Passed	
Frequency	7.7	7.6	7.6	Hz
Overswing Ratio	3.9	3.7	4.1	

