

LOCATION #4 - 9/15/11, 8:45:35 - 17:51:47

Event Report: Monitor Log

Start Time	End Time	Status
SERIAL NUMBER: BE17015		
Sep 15/11 08:45:35		Start Monitoring Trigger Level: Geo: 0.00500 in/s
Sep 15/11 08:51:00	Sep 15/11 08:51:05	Event recorded. Trigger Level Vert: 0.00500 in/s - MMC INDUCED EVENT (INTENTIONAL)
Sep 15/11 08:51:05		Start Monitoring Trigger Level: Geo: 0.00500 in/s
Sep 15/11 09:11:22	Sep 15/11 09:11:27	Event recorded. Trigger Level Vert: 0.00500 in/s
Sep 15/11 09:11:27		Start Monitoring Trigger Level: Geo: 0.00500 in/s
Sep 15/11 09:38:18	Sep 15/11 09:38:23	Event recorded. Trigger Level Vert: 0.00500 in/s
Sep 15/11 09:38:23		Start Monitoring Trigger Level: Geo: 0.00500 in/s
Sep 15/11 09:54:45	Sep 15/11 09:54:50	Event recorded. Trigger Level Vert: 0.00500 in/s
Sep 15/11 09:54:50	Sep 15/11 11:51:40	No events recorded. (Keyboard Exit) Geo: 0.00500 in/s
Sep 15/11 11:52:16		Start Monitoring Trigger Level: Geo: 0.00500 in/s
Sep 15/11 12:08:43	Sep 15/11 12:08:48	Event recorded. Trigger Level Tran: 0.00500 in/s
Sep 15/11 12:08:48		Start Monitoring Trigger Level: Geo: 0.00500 in/s
Sep 15/11 12:47:27	Sep 15/11 12:47:33	Event recorded. Trigger Level Tran: 0.00500 in/s
Sep 15/11 12:47:33		Start Monitoring Trigger Level: Geo: 0.00500 in/s
Sep 15/11 14:58:23	Sep 15/11 14:58:28	Event recorded. Trigger Level Tran: 0.00500 in/s
Sep 15/11 14:58:28		Start Monitoring Trigger Level: Geo: 0.00500 in/s
Sep 15/11 17:19:12	Sep 15/11 17:19:17	Event recorded. Trigger Level Tran: 0.00500 in/s
Sep 15/11 17:19:17	Sep 15/11 17:20:03	No events recorded. (Keyboard Exit) Geo: 0.00500 in/s
Sep 15/11 17:20:22	Sep 15/11 17:51:47	No events recorded. (Keyboard Exit) Geo: 0.00500 in/s

TRAFFIC INDUCED EVENTS

PUMP TEST
16:40 - 17:05
NO EVENTS

PXP Vic 1 330
 Location #4
 9/15/11, 8:45:35 - 17:51:47

Event Report: Event List - p:\petroleum\plains exploration & production (pxp)\vic 1 330 monitoring\data\4.15

Type	Serial No.	Date/Time	No. Chan	Trigger	Tran Peak (in/s)	Vert Peak (in/s)	Long Peak (in/s)	Mic Peak (dB)	PVS1 (in/s)	Description
LOG	BE17015	Sep 15/11 08:45:35	***	***	***	***	***	***	***	Start Monitoring
W	BE17015	Sep 15/11 08:51:00	3	Vert	0.00687	0.0125	0.00562	***	0.0142	PXP-MMC INDUCED EVENT (INTENTIONAL)
W	BE17015	Sep 15/11 09:11:22	3	Vert	0.00437	0.00562	0.00375	***	0.00702	PXP
W	BE17015	Sep 15/11 09:38:18	3	Vert	0.00437	0.00625	0.00437	***	0.00690	PXP
W	BE17015	Sep 15/11 09:54:45	3	Vert	0.00687	0.00500	0.00312	***	0.00793	PXP } TRAFFIC INDUCED EVENTS
LOG	BE17015	Sep 15/11 11:51:40	***	***	***	***	***	***	***	Keyboard Stop
LOG	BE17015	Sep 15/11 11:52:16	***	***	***	***	***	***	***	Start Monitoring
W	BE17015	Sep 15/11 12:08:43	3	Tran	0.00500	0.00437	0.00312	***	0.00640	PXP
W	BE17015	Sep 15/11 12:47:27	3	Tran	0.00562	0.00437	0.00437	***	0.00643	PXP
W	BE17015	Sep 15/11 14:58:23	3	Tran	0.00500	0.00562	0.00562	***	0.00688	PXP
W	BE17015	Sep 15/11 17:19:12	3	Tran	0.00500	0.00437	0.00312	***	0.00563	PXP/
LOG	BE17015	Sep 15/11 17:20:03	***	***	***	***	***	***	***	Keyboard Stop
LOG	BE17015	Sep 15/11 17:20:22	***	***	***	***	***	***	***	Start Monitoring
LOG	BE17015	Sep 15/11 17:51:47	***	***	***	***	***	***	***	Keyboard Stop

(PUMP TEST
 16:40-17:05
 NO EVENTS)

Date/Time Vert at 08:51:00 September 15, 2011
 Trigger Source Geo: 0.00500 in/s
 Range Geo: 1.25 in/s
 Record Time 5.0 sec at 1024 sps

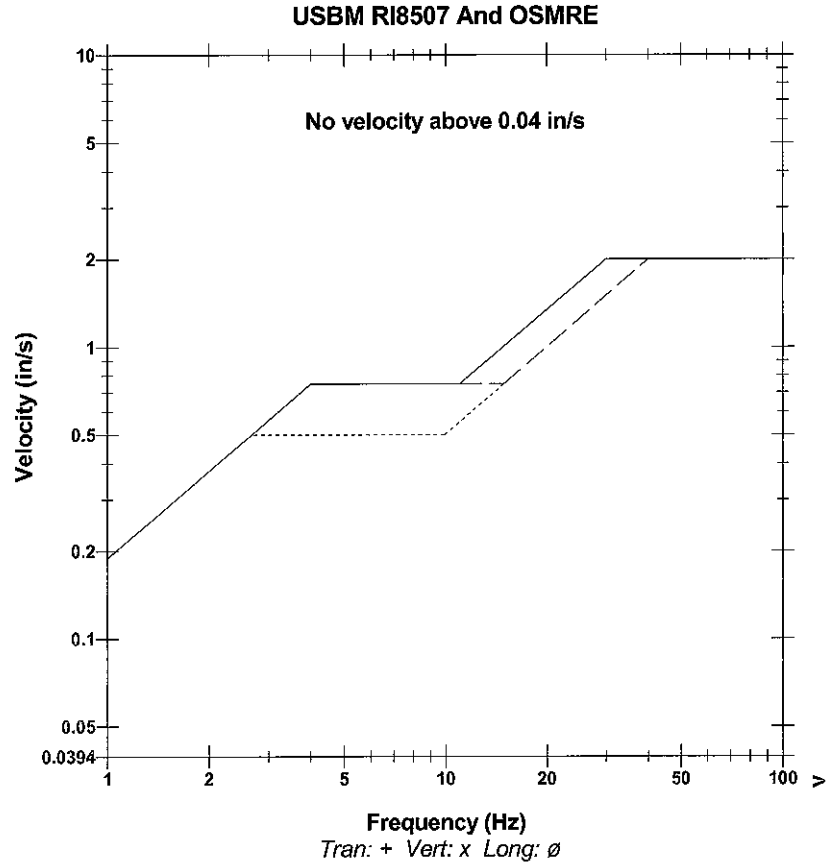
Serial Number BE17015 V 10.10-8.17 MiniMate Plus
 Battery Level 6.3 Volts
 Unit Calibration May 3, 2011 by InstanTel inc.
 File Name S015DXPS.L00

Notes

Client: PXP
 Project: VIC 1 330
 Location: Inglewood Field - Los Angeles, CA
 User: MMC, Inc. - Mark Burgus

Extended Notes:

	Tran	Vert	Long	
PPV	0.00687	0.0125	0.00562	in/s
ZC Freq	64	20	64	Hz
Time (Rel. to Trig)	0.020	0.019	0.018	sec
Peak Acceleration	0.00829	0.0166	0.00829	g
Peak Displacement	0.00004	0.00008	0.00003	in
Sensor Check	Passed	Passed	Passed	
Frequency	7.5	7.6	7.5	Hz
Overswing Ratio	3.8	3.4	3.5	



Time Scale: 0.20 sec/div Amplitude Scale: Geo: 0.01000 in/s/div
 Trigger =

Sensor Check

Date/Time Vert at 09:11:22 September 15, 2011
 Trigger Source Geo: 0.00500 in/s
 Range Geo: 1.25 in/s
 Record Time 5.0 sec at 1024 sps

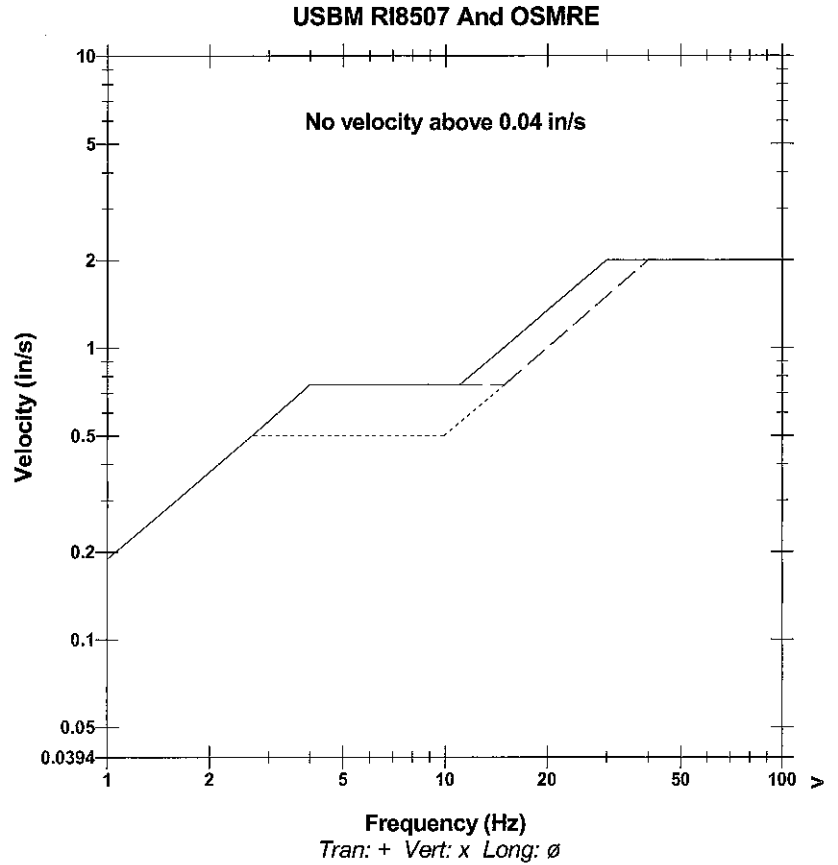
Serial Number BE17015 V 10.10-8.17 MiniMate Plus
 Battery Level 6.4 Volts
 Unit Calibration May 3, 2011 by Instantel inc.
 File Name S015DXPT.IY0

Notes

Client: PXP
 Project: VIC 1 330
 Location: Inglewood Field - Los Angeles, CA
 User: MMC, Inc. - Mark Burgus

Extended Notes:

	Tran	Vert	Long	
PPV	0.00437	0.00562	0.00375	in/s
ZC Freq	15	11	17	Hz
Time (Rel. to Trig)	-0.139	0.002	-0.065	sec
Peak Acceleration	0.00829	0.00663	0.00663	g
Peak Displacement	0.00005	0.00008	0.00004	in
Sensor Check	Passed	Passed	Passed	
Frequency	7.5	7.6	7.5	Hz
Overswing Ratio	3.8	3.4	3.5	



Time Scale: 0.20 sec/div Amplitude Scale: Geo: 0.01000 in/s/div
 Trigger =

Sensor Check

Date/Time Vert at 09:38:18 September 15, 2011
 Trigger Source Geo: 0.00500 in/s
 Range Geo: 1.25 in/s
 Record Time 5.0 sec at 1024 sps

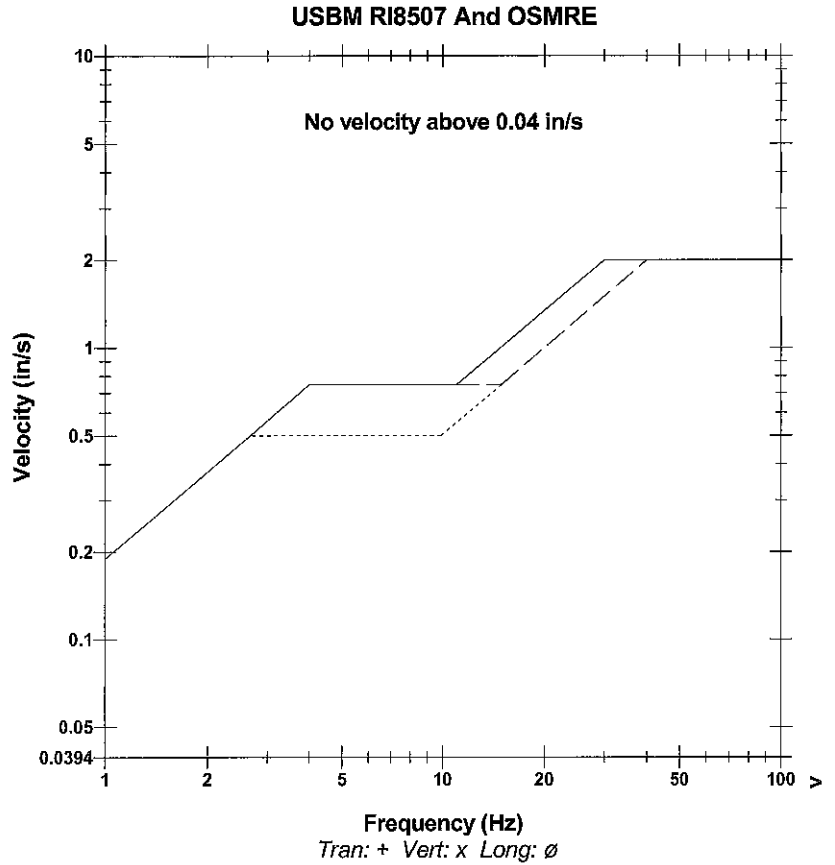
Serial Number BE17015 V 10.10-8.17 MiniMate Plus
 Battery Level 6.3 Volts
 Unit Calibration May 3, 2011 by InstanTel inc.
 File Name S015DXPU.RU0

Notes

Client: PXP
 Project: VIC 1 330
 Location: Inglewood Field - Los Angeles, CA
 User: MMC, Inc. - Mark Burgus

Extended Notes:

	Tran	Vert	Long	
PPV	0.00437	0.00625	0.00437	in/s
ZC Freq	17	16	18	Hz
Time (Rel. to Trig)	-0.090	0.004	-0.194	sec
Peak Acceleration	0.00663	0.00829	0.00663	g
Peak Displacement	0.00004	0.00006	0.00004	in
Sensor Check	Passed	Passed	Passed	
Frequency	7.5	7.6	7.5	Hz
Overswing Ratio	3.8	3.4	3.5	



Time Scale: 0.20 sec/div Amplitude Scale: Geo: 0.01000 in/s/div
 Trigger =

Sensor Check

Date/Time Vert at 09:54:45 September 15, 2011
 Trigger Source Geo: 0.00500 in/s
 Range Geo: 1.25 in/s
 Record Time 5.0 sec at 1024 sps

Serial Number BE17015 V 10.10-8.17 MiniMate Plus
 Battery Level 6.3 Volts
 Unit Calibration May 3, 2011 by InstanTel inc.
 File Name S015DXPV.J90

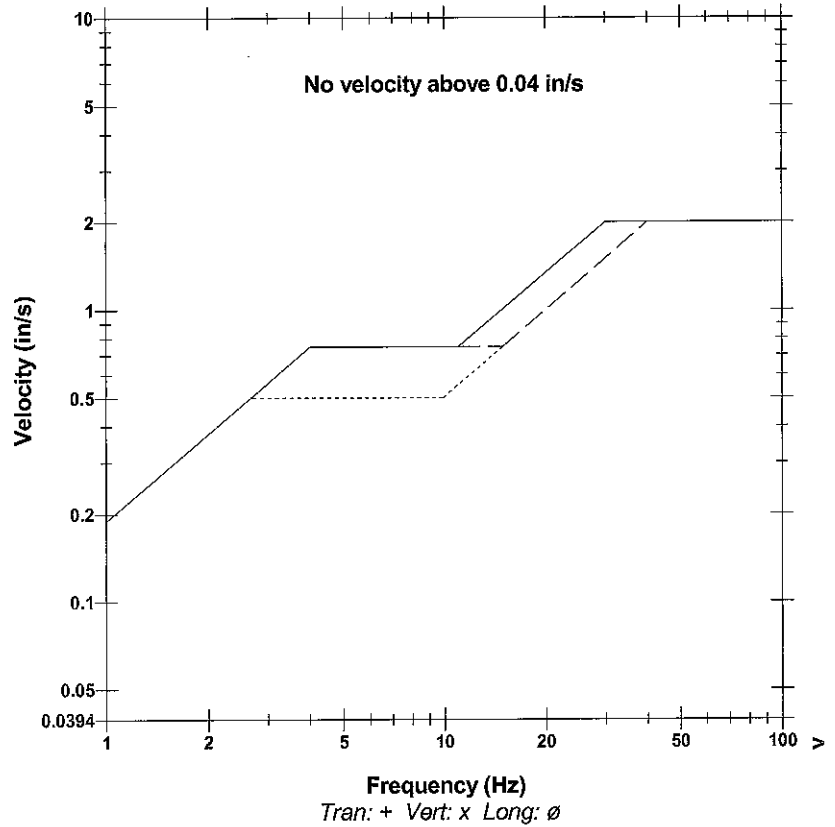
Notes

Client: PXP
 Project: VIC 1 330
 Location: Inglewood Field - Los Angeles, CA
 User: MMC, Inc. - Mark Burgus

Extended Notes:

	Tran	Vert	Long	
PPV	0.00687	0.00500	0.00312	in/s
ZC Freq	12	16	51	Hz
Time (Rel. to Trig)	0.009	0.000	0.163	sec
Peak Acceleration	0.00663	0.00663	0.00663	g
Peak Displacement	0.00008	0.00007	0.00002	in
Sensor Check	Passed	Passed	Passed	
Frequency	7.5	7.6	7.5	Hz
Overswing Ratio	3.8	3.4	3.5	

USBM RI8507 And OSMRE



Time Scale: 0.20 sec/div Amplitude Scale: Geo: 0.01000 in/s/div
 Trigger =

Sensor Check

Date/Time *Tran at 12:08:43 September 15, 2011*
 Trigger Source *Geo: 0.00500 in/s*
 Range *Geo: 1.25 in/s*
 Record Time *5.0 sec at 1024 sps*

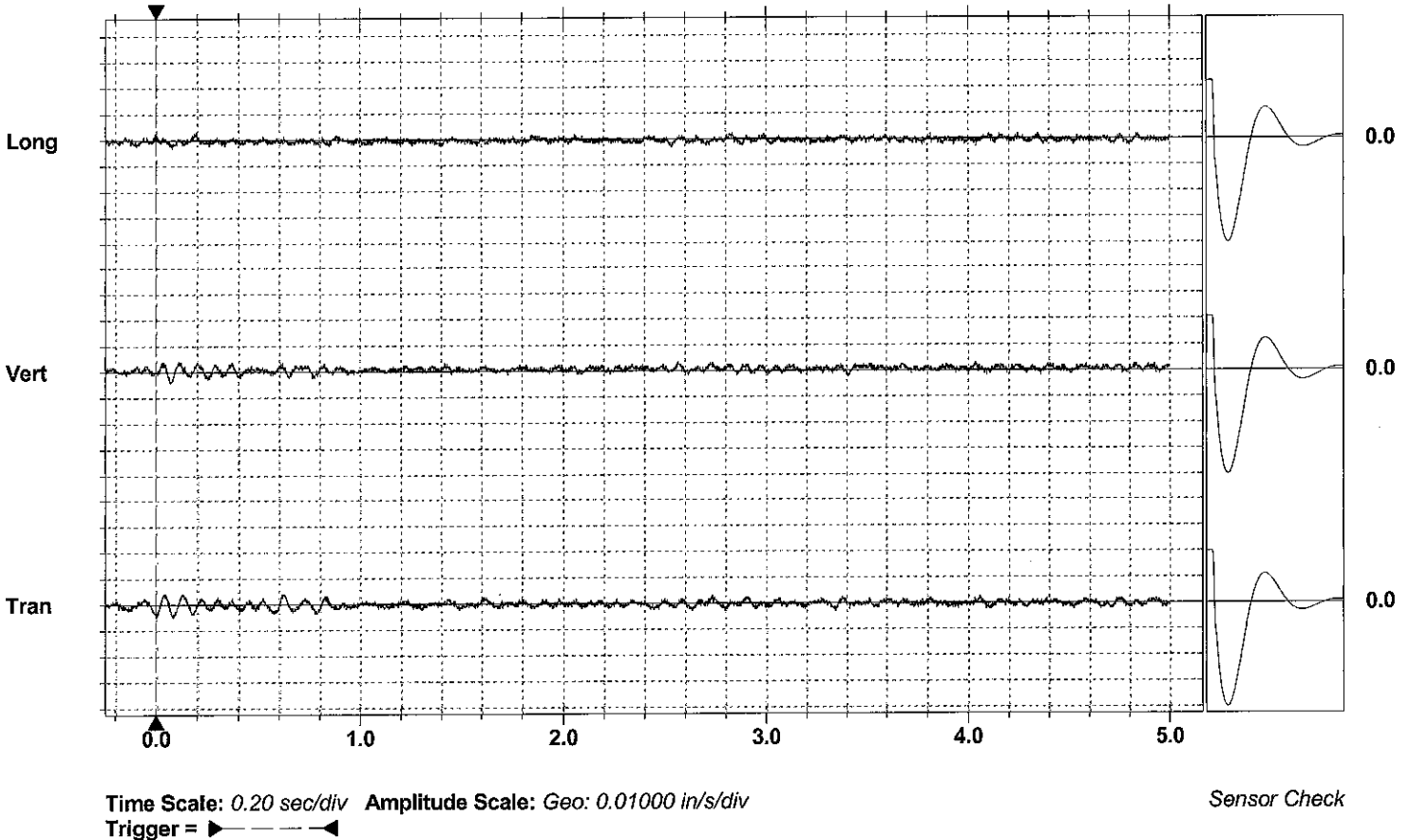
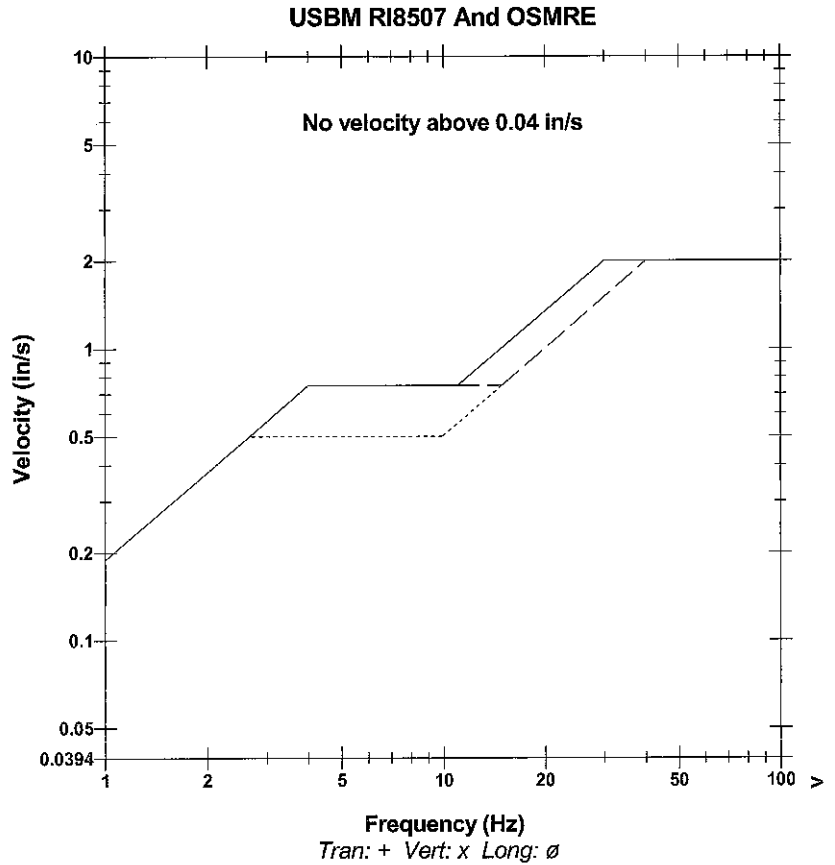
Serial Number *BE17015 V 10.10-8.17 MiniMate Plus*
 Battery Level *6.4 Volts*
 Unit Calibration *May 3, 2011 by Instantel inc.*
 File Name *S015DXQ1.QJ0*

Notes

Client: *PXP*
 Project: *VIC 1 330*
 Location: *Inglewood Field - Los Angeles, CA*
 User: *MMC, Inc. - Mark Burgus*

Extended Notes:

	Tran	Vert	Long	
PPV	0.00500	0.00437	0.00312	in/s
ZC Freq	12	16	17	Hz
Time (Rel. to Trig)	0.000	0.069	0.078	sec
Peak Acceleration	0.00663	0.00663	0.00663	g
Peak Displacement	0.00006	0.00005	0.00003	in
Sensor Check	Passed	Passed	Passed	
Frequency	7.6	7.6	7.5	Hz
Overswing Ratio	3.7	3.3	3.4	



Date/Time Tran at 12:47:27 September 15, 2011
Trigger Source Geo: 0.00500 in/s
Range Geo: 1.25 in/s
Record Time 5.0 sec at 1024 sps

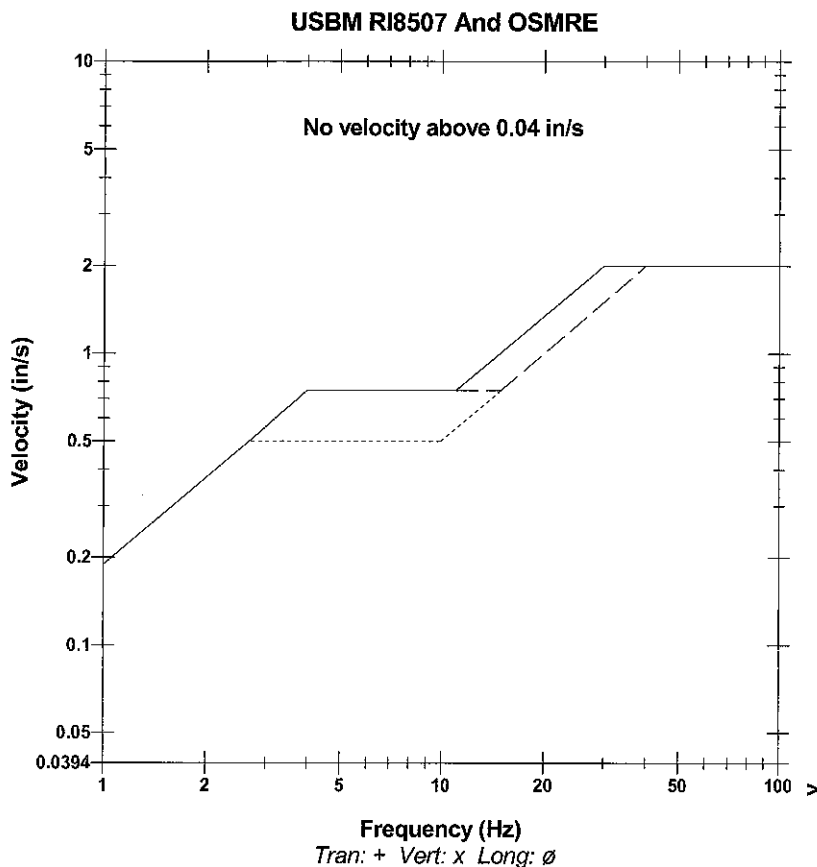
Serial Number BE17015 V 10.10-8.17 MiniMate Plus
Battery Level 6.4 Volts
Unit Calibration May 3, 2011 by InstanTel inc.
File Name S015DXQ3.J30

Notes

Client: PXP
Project: VIC 1 330
Location: Inglewood Field - Los Angeles, CA
User: MMC, Inc. - Mark Burgus

Extended Notes:

	Tran	Vert	Long	
PPV	0.00562	0.00437	0.00437	in/s
ZC Freq	12	9.5	10	Hz
Time (Rel. to Trig)	2.987	3.658	4.170	sec
Peak Acceleration	0.00663	0.00663	0.00663	g
Peak Displacement	0.00006	0.00007	0.00007	in
Sensor Check	Passed	Passed	Passed	
Frequency	7.6	7.6	7.5	Hz
Overswing Ratio	3.7	3.3	3.4	



Time Scale: 0.20 sec/div **Amplitude Scale:** Geo: 0.01000 in/s/div
Trigger =

Sensor Check

Date/Time *Tran at 14:58:23 September 15, 2011*
 Trigger Source *Geo: 0.00500 in/s*
 Range *Geo: 1.25 in/s*
 Record Time *5.0 sec at 1024 sps*

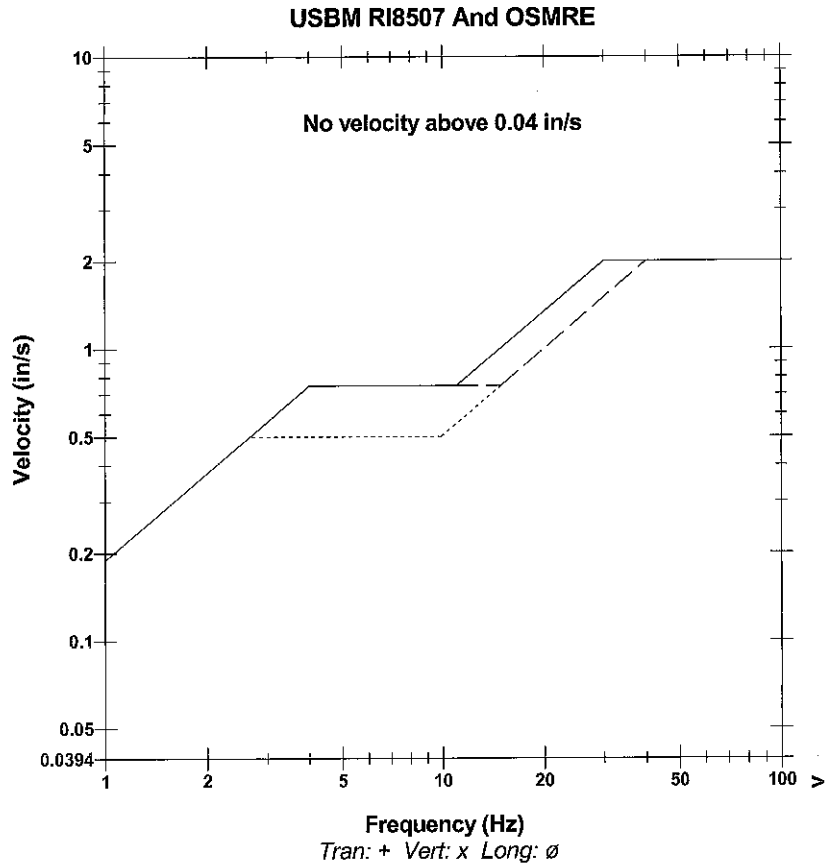
Serial Number *BE17015 V 10.10-8.17 MiniMate Plus*
 Battery Level *6.4 Volts*
 Unit Calibration *May 3, 2011 by InstanTel inc.*
 File Name *S015DXQ9.LB0*

Notes

Client: *PXP*
 Project: *VIC 1 330*
 Location: *Inglewood Field - Los Angeles, CA*
 User: *MMC, Inc. - Mark Burgus*

Extended Notes:

	Tran	Vert	Long	
PPV	0.00500	0.00562	0.00562	in/s
ZC Freq	12	14	15	Hz
Time (Rel. to Trig)	0.000	0.791	0.826	sec
Peak Acceleration	0.00663	0.00663	0.00663	g
Peak Displacement	0.00008	0.00006	0.00008	in
Sensor Check	Passed	Passed	Passed	
Frequency	7.6	7.6	7.5	Hz
Overswing Ratio	3.7	3.3	3.4	



Date/Time *Tran at 17:19:12 September 15, 2011*
 Trigger Source *Geo: 0.00500 in/s*
 Range *Geo: 1.25 in/s*
 Record Time *5.0 sec at 1024 sps*

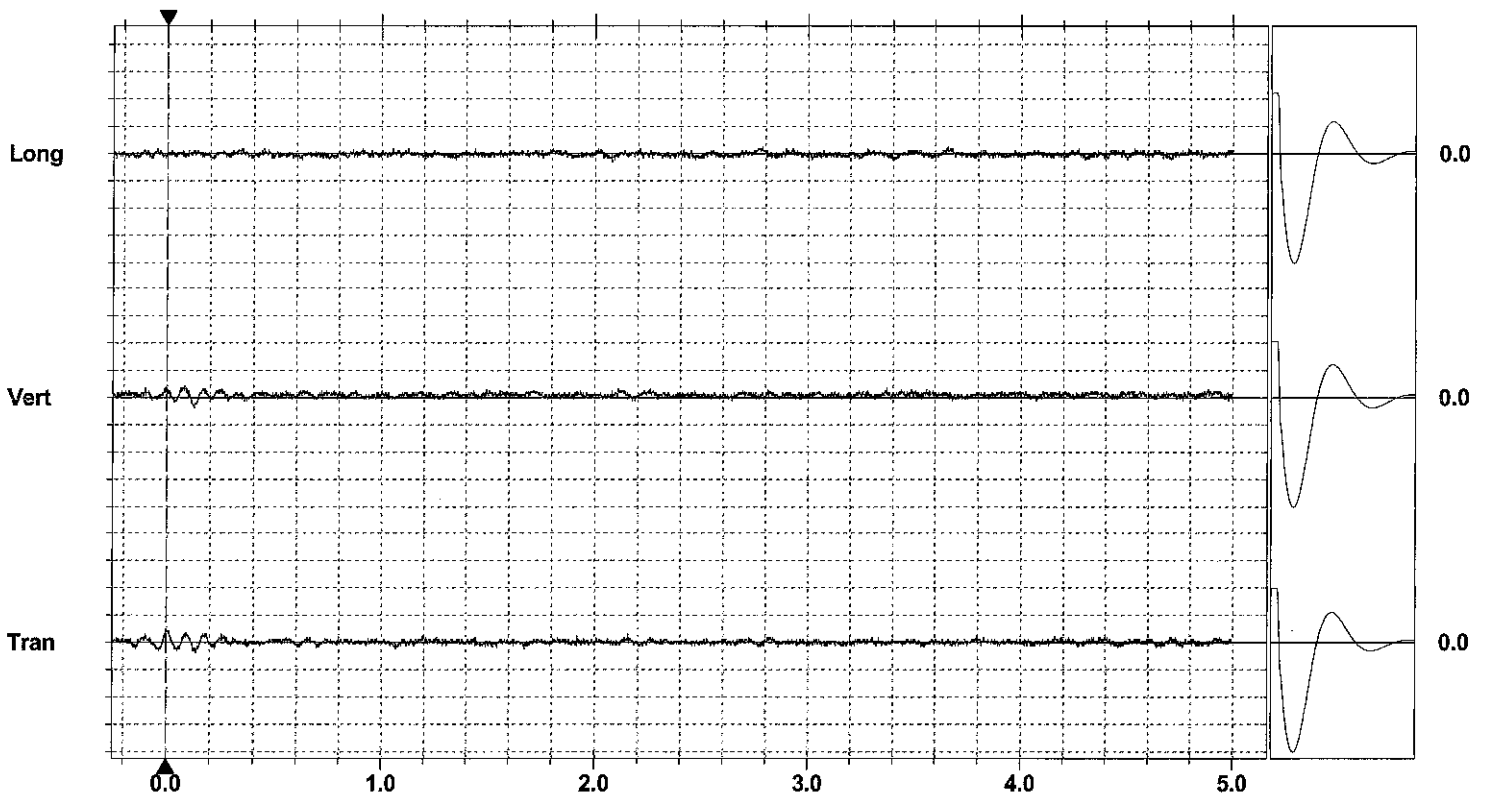
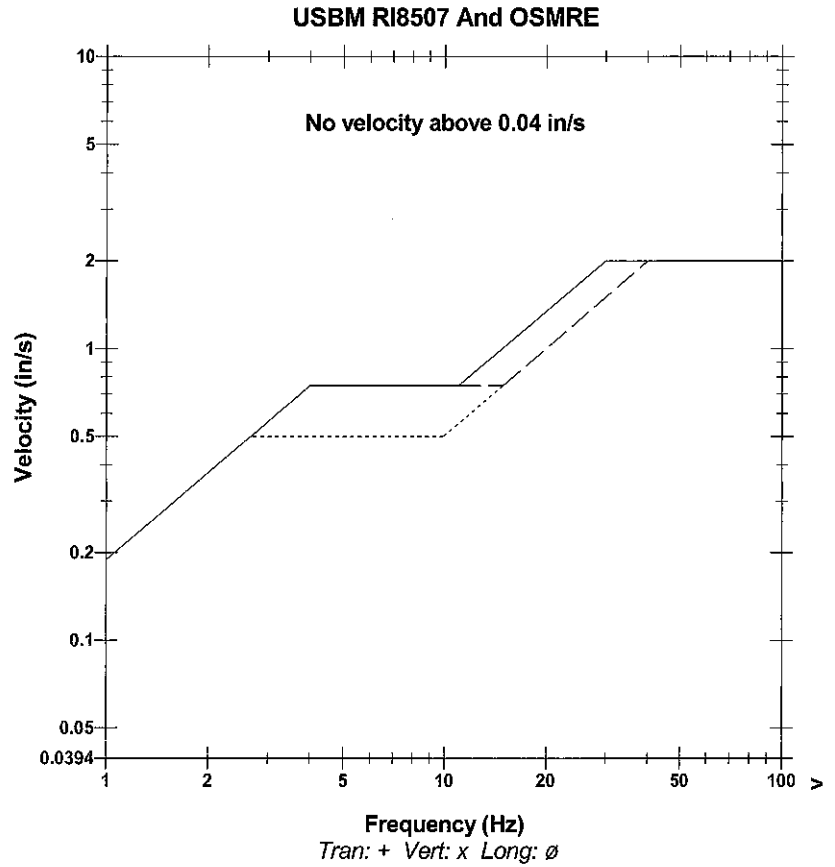
Serial Number *BE17015 V 10.10-8.17 MiniMate Plus*
 Battery Level *6.4 Volts*
 Unit Calibration *May 3, 2011 by Instantel inc.*
 File Name *S015DXQG.400*

Notes

Client: *PXP*
 Project: *VIC 1 330*
 Location: *Inglewood Field - Los Angeles, CA*
 User: *MMC, Inc. - Mark Burgus*

Extended Notes:

	Tran	Vert	Long	
PPV	0.00500	0.00437	0.00312	in/s
ZC Freq	14	12	57	Hz
Time (Rel. to Trig)	0.000	0.082	2.079	sec
Peak Acceleration	0.00663	0.00663	0.00663	g
Peak Displacement	0.00005	0.00005	0.00002	in
Sensor Check	Passed	Passed	Passed	
Frequency	7.6	7.6	7.5	Hz
Overswing Ratio	3.7	3.3	3.4	



Time Scale: 0.20 sec/div Amplitude Scale: Geo: 0.01000 in/s/div
 Trigger = \blacktriangleleft \blacktriangleright

Sensor Check