

LOCATION #2 - 9/15/11, 12:46:52 - 17:41:54

Event Report: Monitor Log

Start Time	End Time	Status
		SERIAL NUMBER: BE17093
Sep 15/11 12:46:52		Start Monitoring Trigger Level: Geo: 0.00500 in/s
Sep 15/11 12:47:06	Sep 15/11 12:47:11	Event recorded. Trigger Level Vert: 0.00500 in/s - MMC INDUCED EVENT (INTENTIONAL)
Sep 15/11 12:47:11		Start Monitoring Trigger Level: Geo: 0.00500 in/s
Sep 15/11 13:01:35	Sep 15/11 13:01:40	Event recorded. Trigger Level Tran: 0.00500 in/s
Sep 15/11 13:01:40		Start Monitoring Trigger Level: Geo: 0.00500 in/s
Sep 15/11 13:18:28	Sep 15/11 13:18:33	Event recorded. Trigger Level Vert: 0.00500 in/s
Sep 15/11 13:18:33	Sep 15/11 13:46:50	No events recorded. (Keyboard Exit) Geo: 0.00500 in/s
Sep 15/11 13:47:11		Start Monitoring Trigger Level: Geo: 0.00500 in/s
Sep 15/11 14:39:14	Sep 15/11 14:39:19	Event recorded. Trigger Level Long: 0.00500 in/s
Sep 15/11 14:39:19		Start Monitoring Trigger Level: Geo: 0.00500 in/s
Sep 15/11 14:43:09	Sep 15/11 14:43:14	Event recorded. Trigger Level Long: 0.00500 in/s
Sep 15/11 14:43:14		Start Monitoring Trigger Level: Geo: 0.00500 in/s
Sep 15/11 14:56:27	Sep 15/11 14:56:32	Event recorded. Trigger Level Long: 0.00500 in/s
Sep 15/11 14:56:32		Start Monitoring Trigger Level: Geo: 0.00500 in/s
Sep 15/11 15:00:17	Sep 15/11 15:00:22	Event recorded. Trigger Level Long: 0.00500 in/s
Sep 15/11 15:00:22		Start Monitoring Trigger Level: Geo: 0.00500 in/s
Sep 15/11 15:00:34	Sep 15/11 15:00:39	Event recorded. Trigger Level Long: 0.00500 in/s
Sep 15/11 15:00:39		Start Monitoring Trigger Level: Geo: 0.00500 in/s
Sep 15/11 15:27:53	Sep 15/11 15:27:59	Event recorded. Trigger Level Long: 0.00500 in/s
Sep 15/11 15:27:59		Start Monitoring Trigger Level: Geo: 0.00500 in/s
Sep 15/11 16:54:54	Sep 15/11 16:54:59	Event recorded. Trigger Level Tran: 0.00500 in/s
Sep 15/11 16:54:59		Start Monitoring Trigger Level: Geo: 0.00500 in/s
Sep 15/11 16:58:23	Sep 15/11 16:58:28	Event recorded. Trigger Level Tran: 0.00500 in/s
Sep 15/11 16:58:28		Start Monitoring Trigger Level: Geo: 0.00500 in/s
Sep 15/11 17:00:05	Sep 15/11 17:00:10	Event recorded. Trigger Level Tran: 0.00500 in/s
Sep 15/11 17:00:10		Start Monitoring Trigger Level: Geo: 0.00500 in/s
Sep 15/11 17:00:18	Sep 15/11 17:00:23	Event recorded. Trigger Level Tran: 0.00500 in/s
Sep 15/11 17:00:23		Start Monitoring Trigger Level: Geo: 0.00500 in/s
Sep 15/11 17:00:34	Sep 15/11 17:00:39	Event recorded. Trigger Level Tran: 0.00500 in/s
Sep 15/11 17:00:39	Sep 15/11 17:00:44	Event recorded. Trigger Level Tran: 0.00500 in/s
Sep 15/11 17:00:44		Start Monitoring Trigger Level: Geo: 0.00500 in/s
Sep 15/11 17:00:45	Sep 15/11 17:00:50	Event recorded. Trigger Level Tran: 0.00500 in/s
Sep 15/11 17:00:50	Sep 15/11 17:00:52	Event recorded. (Keyboard Exit) Trigger Level Tran: 0.00500 in/s
Sep 15/11 17:01:30	Sep 15/11 17:06:22	No events recorded. (Keyboard Exit) Geo: 0.00700 in/s
Sep 15/11 17:08:07		Start Monitoring Trigger Level: Geo: 0.00500 in/s
Sep 15/11 17:09:29	Sep 15/11 17:09:34	Event recorded. Trigger Level Tran: 0.00500 in/s
Sep 15/11 17:09:34		Start Monitoring Trigger Level: Geo: 0.00500 in/s
Sep 15/11 17:19:11	Sep 15/11 17:19:16	Event recorded. Trigger Level Long: 0.00500 in/s
Sep 15/11 17:19:16	Sep 15/11 17:41:54	No events recorded. (Keyboard Exit) Geo: 0.00500 in/s

17 EVENTS INDUCED BY
DIESELS, SAND MIXING &
WELL SITE ACTIVITY

PUMP TEST
16:40 - 17:05

PXP Vic 1 330
Location #2
9/15/11, 12:46:52 - 17:41:54

Event Report: Event List - p:\petroleum\plains exploration & production (pxp)\vic 1 330 monitoring\data\2.15b

Type	Serial No.	Date/Time	No. Chan	Trigger	Tran Peak (in/s)	Vert Peak (in/s)	Long Peak (in/s)	Mic Peak (dB)	PVS1 (in/s)	Description
LOG	BE17093	Sep 15/11 12:46:52	***	***	***	***	***	***	***	Start Monitoring
W	BE17093	Sep 15/11 12:47:06	3	Vert	0.00812	0.0125	0.0106	***	0.0141	PXP - MMC INDUCED EVENT (INTENTIONAL)
W	BE17093	Sep 15/11 13:01:35	3	Tran	0.00500	0.00250	0.00375	***	0.00504	PXP
W	BE17093	Sep 15/11 13:18:28	3	Vert	0.00375	0.00500	0.00375	***	0.00673	PXP
LOG	BE17093	Sep 15/11 13:46:50	***	***	***	***	***	***	***	Keyboard Stop
LOG	BE17093	Sep 15/11 13:47:11	***	***	***	***	***	***	***	Start Monitoring
W	BE17093	Sep 15/11 14:39:14	3	Long	0.00375	0.00312	0.00625	***	0.00702	PXP
W	BE17093	Sep 15/11 14:43:09	3	Long	0.00500	0.00437	0.00562	***	0.00721	PXP
W	BE17093	Sep 15/11 14:56:27	3	Long	0.00375	0.00375	0.00500	***	0.00580	PXP
W	BE17093	Sep 15/11 15:00:17	3	Long	0.00437	0.00375	0.00562	***	0.00606	PXP
W	BE17093	Sep 15/11 15:00:34	3	Long	0.00375	0.00437	0.00500	***	0.00548	PXP
W	BE17093	Sep 15/11 15:27:53	3	Long	0.00500	0.00312	0.00562	***	0.00616	PXP
W	BE17093	Sep 15/11 16:54:54	3	Tran	0.00500	0.00312	0.00437	***	0.00559	PXP
W	BE17093	Sep 15/11 16:58:23	3	Tran	0.00500	0.00375	0.00437	***	0.00603	PXP
W	BE17093	Sep 15/11 17:00:05	3	Tran	0.00500	0.00312	0.00375	***	0.00534	PXP
W	BE17093	Sep 15/11 17:00:18	3	Tran	0.00500	0.00312	0.00312	***	0.00538	PXP
W	BE17093	Sep 15/11 17:00:34	3	Tran	0.00500	0.00375	0.00375	***	0.00622	PXP
W	BE17093	Sep 15/11 17:00:39	3	Tran	0.00500	0.00375	0.00375	***	0.00590	PXP
W	BE17093	Sep 15/11 17:00:45	3	Tran	0.00625	0.00375	0.00375	***	0.00685	PXP
W	BE17093	Sep 15/11 17:00:50	3	Tran	0.00500	0.00375	0.00312	***	0.00640	PXP
LOG	BE17093	Sep 15/11 17:00:52	***	***	***	***	***	***	***	Stop Monitoring
LOG	BE17093	Sep 15/11 17:01:30	***	***	***	***	***	***	***	Start Monitoring
LOG	BE17093	Sep 15/11 17:06:22	***	***	***	***	***	***	***	Keyboard Stop
LOG	BE17093	Sep 15/11 17:08:07	***	***	***	***	***	***	***	Start Monitoring
W	BE17093	Sep 15/11 17:09:29	3	Tran	0.00812	0.00250	0.00375	***	0.00834	PXP - MMC INDUCED EVENT (UNINTENTIONAL)
W	BE17093	Sep 15/11 17:19:11	3	Long	0.00375	0.00375	0.00500	***	0.00538	PXP
LOG	BE17093	Sep 15/11 17:41:54	***	***	***	***	***	***	***	Keyboard Stop

17 EVENTS INDUCED BY DIESELS, SAND MIXING & WELLSITE ACTIVITY

PUMP TEST 16:40-17:05

Date/Time Vert at 12:47:06 September 15, 2011
 Trigger Source Geo: 0.00500 in/s
 Range Geo: 1.25 in/s
 Record Time 5.0 sec at 1024 sps

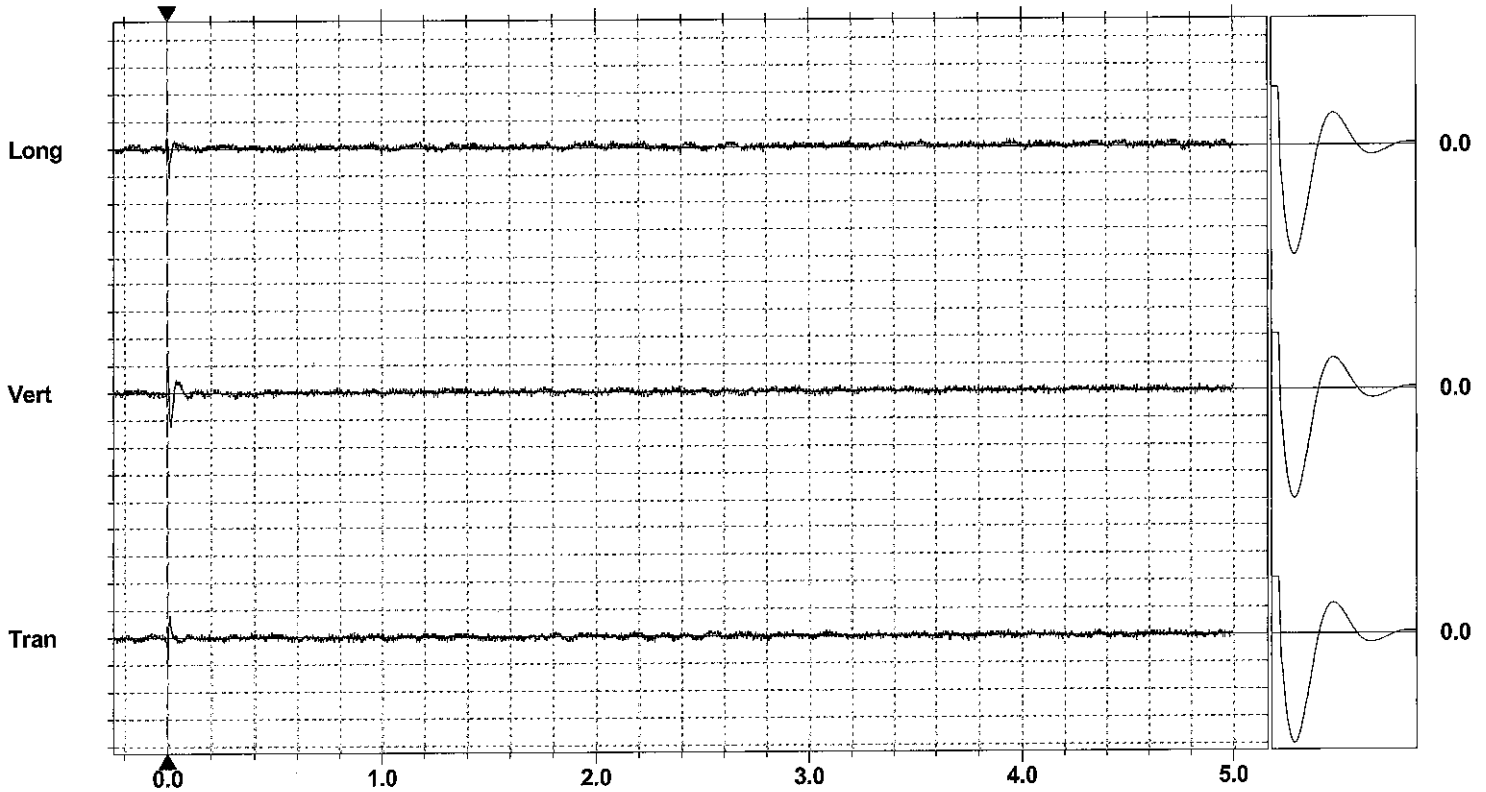
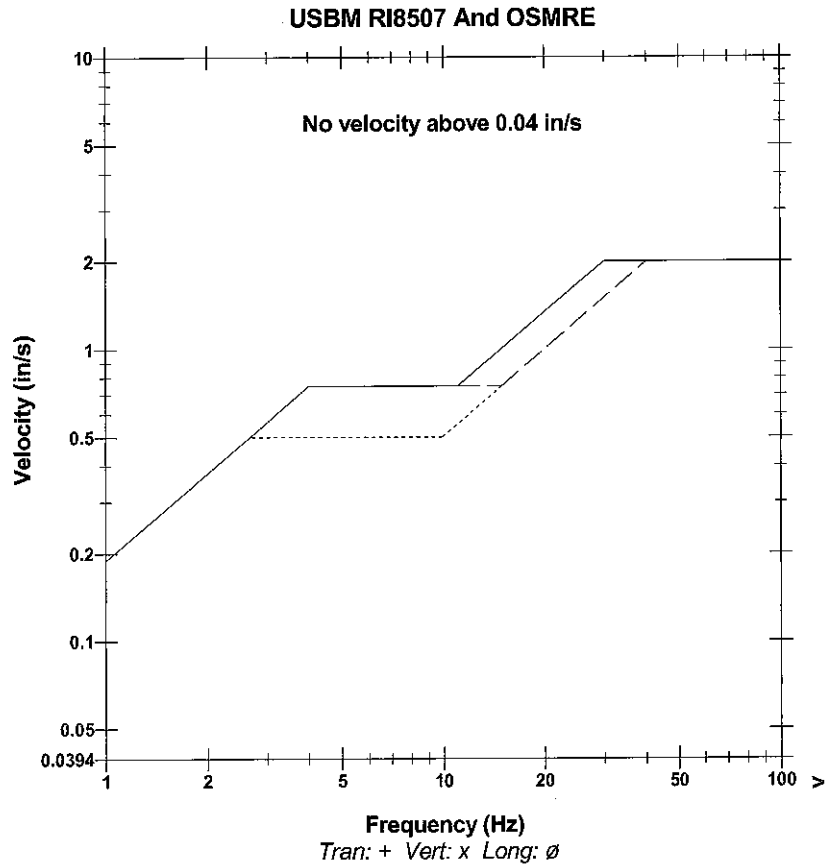
Serial Number BE17093 V 10.06-8.17 MiniMate Plus
 Battery Level 6.5 Volts
 Unit Calibration May 13, 2011 by InstanTel
 File Name S093DXQ3.I10

Notes

Client: PXP
 Project: VIC 1 330
 Location: Inglewood Field - Los Angeles, CA
 User: MMC, Inc. - Mark Burgus

Extended Notes:

	Tran	Vert	Long	
PPV	0.00812	0.0125	0.0106	in/s
ZC Freq	37	22	30	Hz
Time (Rel. to Trig)	0.004	0.018	0.011	sec
Peak Acceleration	0.0116	0.0133	0.00994	g
Peak Displacement	0.00004	0.00008	0.00004	in
Sensor Check	Passed	Passed	Passed	
Frequency	7.6	7.5	7.5	Hz
Overswing Ratio	3.6	3.5	3.4	



Time Scale: 0.20 sec/div Amplitude Scale: Geo: 0.01000 in/s/div
 Trigger =

Sensor Check

Date/Time Tran at 13:01:35 September 15, 2011
Trigger Source Geo: 0.00500 in/s
Range Geo: 1.25 in/s
Record Time 5.0 sec at 1024 sps

Serial Number BE17093 V 10.06-8.17 MiniMate Plus
Battery Level 6.5 Volts
Unit Calibration May 13, 2011 by InstanTel
File Name S093DXQ4.6N0

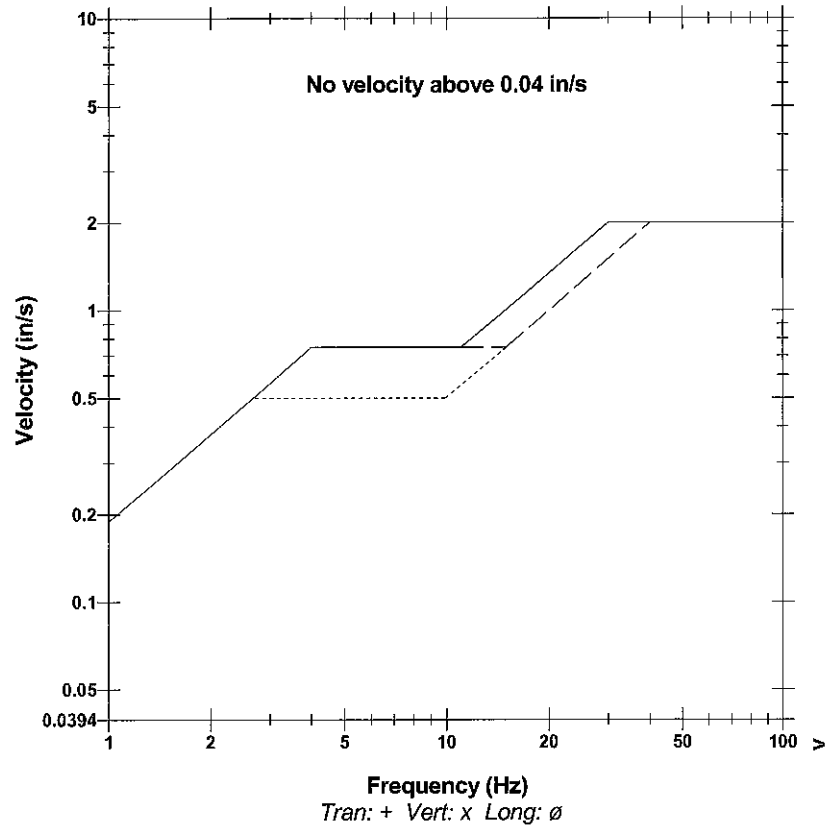
Notes

Client: PXP
Project: VIC 1 330
Location: Inglewood Field - Los Angeles, CA
User: MMC, Inc. - Mark Burgus

Extended Notes:

	Tran	Vert	Long	
PPV	0.00500	0.00250	0.00375	in/s
ZC Freq	24	34	18	Hz
Time (Rel. to Trig)	0.000	-0.239	0.891	sec
Peak Acceleration	0.00663	0.00663	0.00829	g
Peak Displacement	0.00003	0.00001	0.00003	in
Sensor Check	Passed	Passed	Passed	
Frequency	7.6	7.5	7.5	Hz
Overswing Ratio	3.6	3.5	3.4	

USBM RI8507 And OSMRE



Time Scale: 0.20 sec/div Amplitude Scale: Geo: 0.01000 in/s/div
 Trigger =

Sensor Check

Date/Time Vert at 13:18:28 September 15, 2011
Trigger Source Geo: 0.00500 in/s
Range Geo: 1.25 in/s
Record Time 5.0 sec at 1024 sps

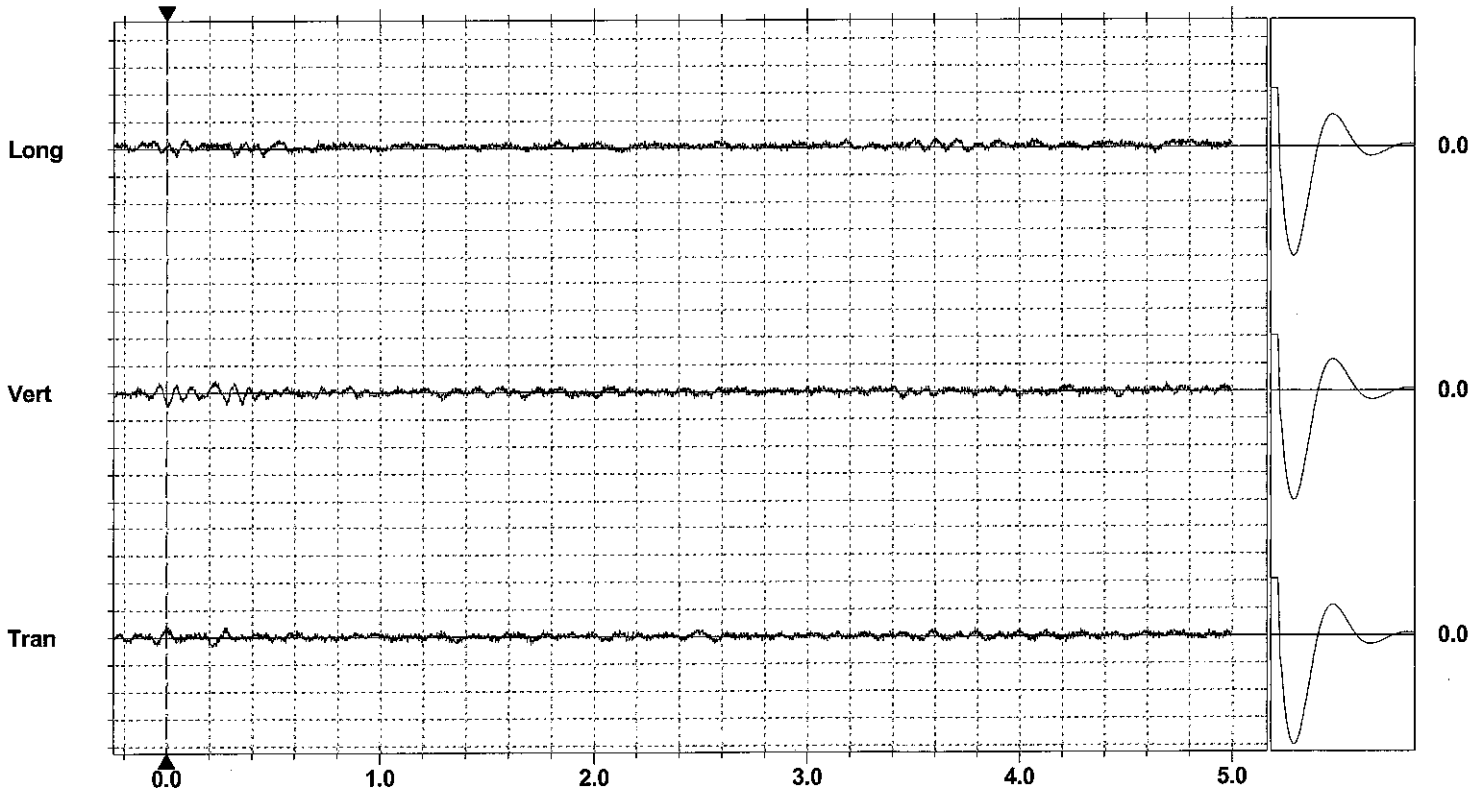
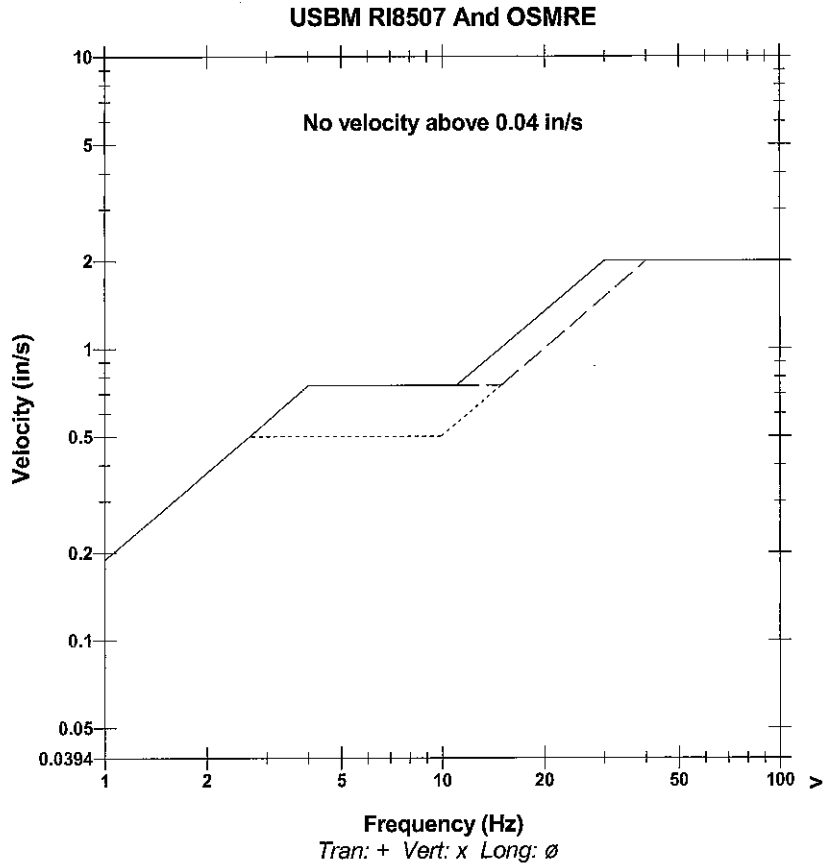
Serial Number BE17093 V 10.06-8.17 MiniMate Plus
Battery Level 6.5 Volts
Unit Calibration May 13, 2011 by InstanTel
File Name S093DXQ4.YSO

Notes

Client: PXP
Project: VIC 1 330
Location: Inglewood Field - Los Angeles, CA
User: MMC, Inc. - Mark Burgus

Extended Notes:

	Tran	Vert	Long	
PPV	0.00375	0.00500	0.00375	in/s
ZC Freq	11	12	12	Hz
Time (Rel. to Trig)	0.002	0.000	0.084	sec
Peak Acceleration	0.00829	0.00829	0.00829	g
Peak Displacement	0.00005	0.00006	0.00005	in
Sensor Check	Passed	Passed	Passed	
Frequency	7.6	7.5	7.5	Hz
Overswing Ratio	3.6	3.5	3.4	



Time Scale: 0.20 sec/div **Amplitude Scale:** Geo: 0.01000 in/s/div
Trigger =

Sensor Check

Date/Time Long at 14:39:14 September 15, 2011
 Trigger Source Geo: 0.00500 in/s
 Range Geo: 1.25 in/s
 Record Time 5.0 sec at 1024 sps

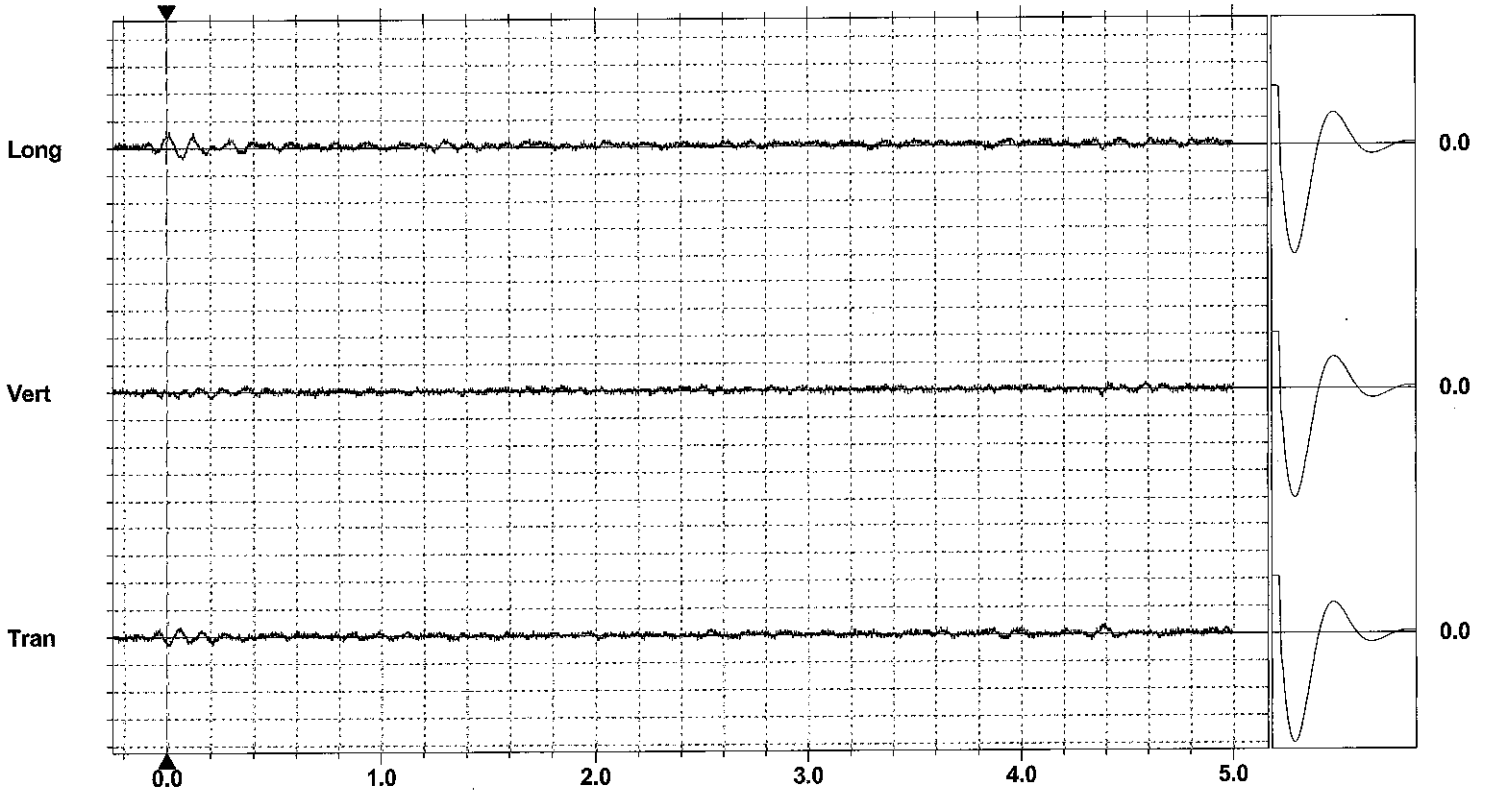
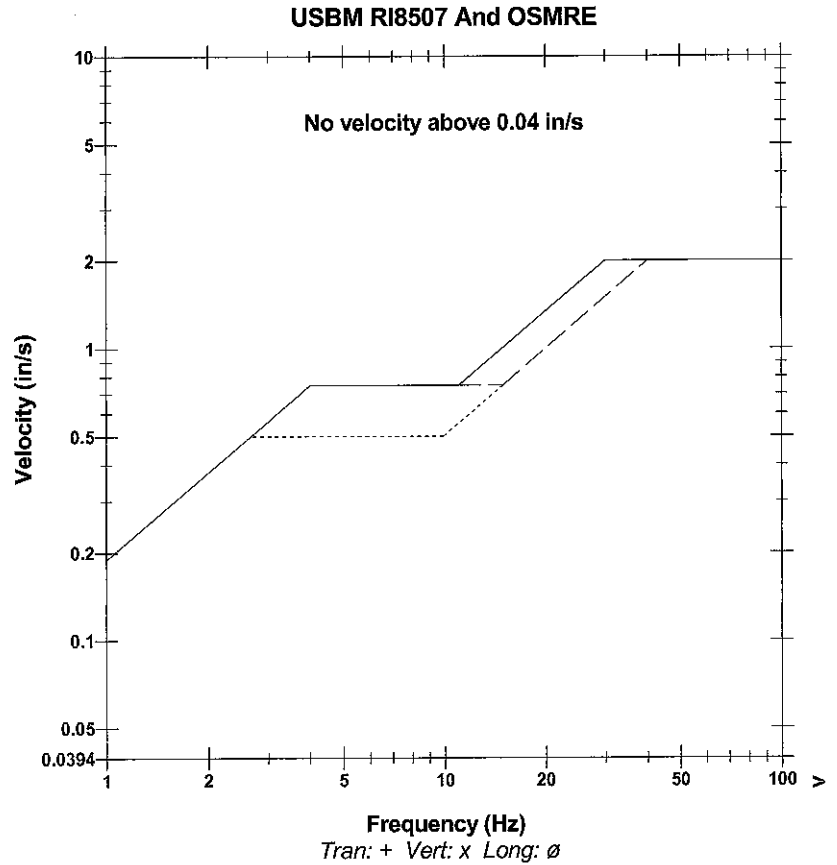
Serial Number BE17093 V 10.06-8.17 MiniMate Plus
 Battery Level 6.5 Volts
 Unit Calibration May 13, 2011 by InstanTel
 File Name S093DXQ8.PE0

Notes

Client: PXP
 Project: VIC 1 330
 Location: Inglewood Field - Los Angeles, CA
 User: MMC, Inc. - Mark Burgus

Extended Notes:

	Tran	Vert	Long	
PPV	0.00375	0.00312	0.00625	in/s
ZC Freq	16	24	8.1	Hz
Time (Rel. to Trig)	0.063	4.385	0.013	sec
Peak Acceleration	0.00663	0.00663	0.00829	g
Peak Displacement	0.00004	0.00002	0.00009	in
Sensor Check	Passed	Passed	Passed	
Frequency	7.5	7.5	7.5	Hz
Overswing Ratio	3.6	3.5	3.5	



Time Scale: 0.20 sec/div Amplitude Scale: Geo: 0.01000 in/s/div
 Trigger =

Sensor Check

Date/Time Long at 14:43:09 September 15, 2011
 Trigger Source Geo: 0.00500 in/s
 Range Geo: 1.25 in/s
 Record Time 5.0 sec at 1024 sps

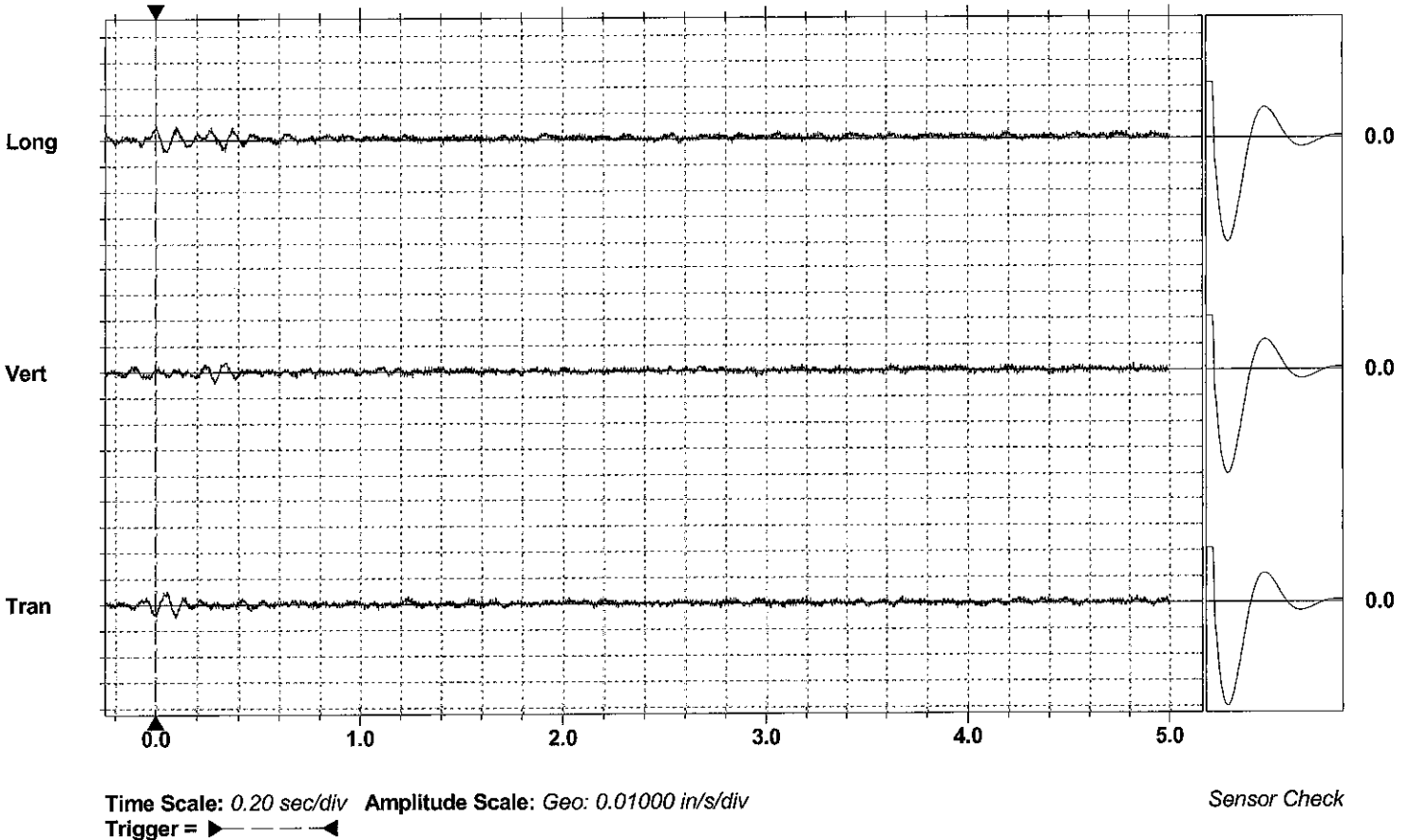
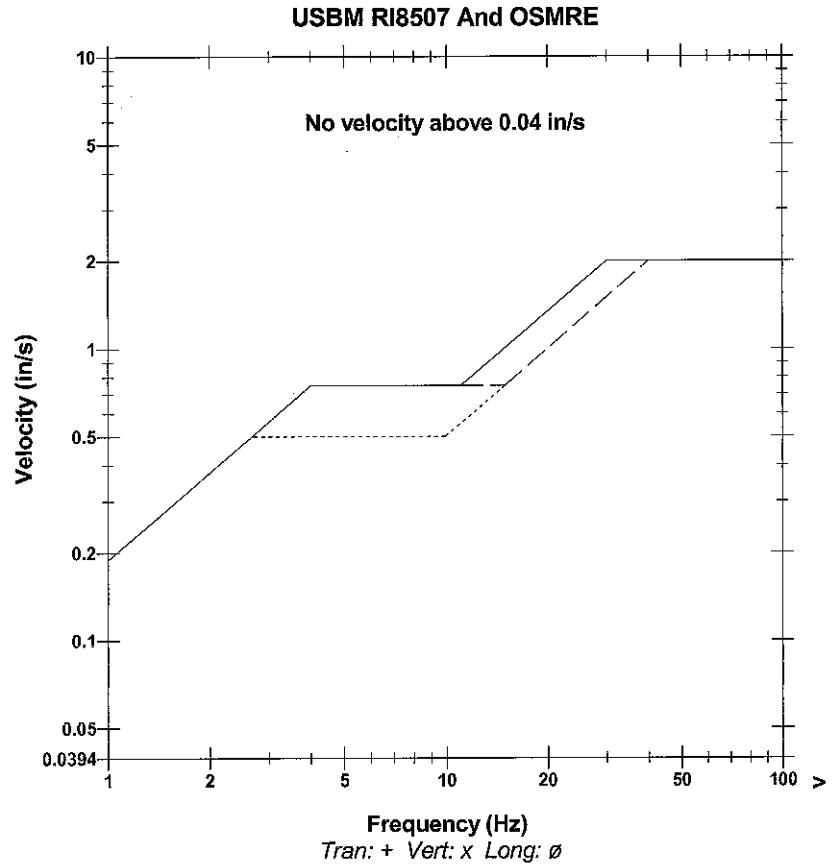
Serial Number BE17093 V 10.06-8.17 MiniMate Plus
 Battery Level 6.5 Volts
 Unit Calibration May 13, 2011 by InstanTel
 File Name S093DXQ8.VX0

Notes

Client: PXP
 Project: VIC 1 330
 Location: Inglewood Field - Los Angeles, CA
 User: MMC, Inc. - Mark Burgus

Extended Notes:

	Tran	Vert	Long	
PPV	0.00500	0.00437	0.00562	in/s
ZC Freq	11	12	10	Hz
Time (Rel. to Trig)	0.041	0.284	0.000	sec
Peak Acceleration	0.00663	0.00663	0.00663	g
Peak Displacement	0.00007	0.00005	0.00007	in
Sensor Check	Passed	Passed	Passed	
Frequency	7.5	7.5	7.5	Hz
Overswing Ratio	3.6	3.5	3.5	



Sensor Check

Date/Time Long at 14:56:27 September 15, 2011
 Trigger Source Geo: 0.00500 in/s
 Range Geo: 1.25 in/s
 Record Time 5.0 sec at 1024 sps

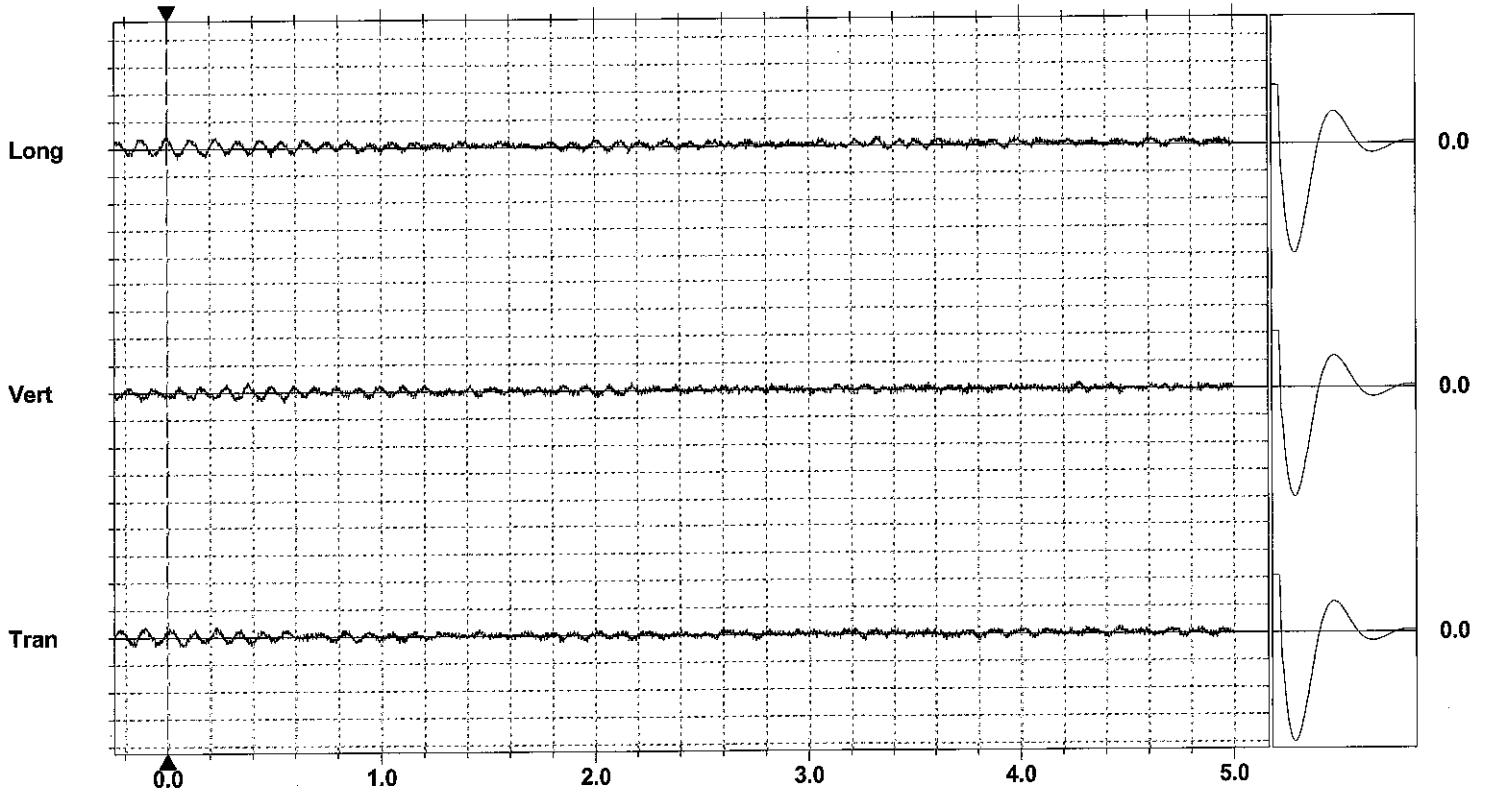
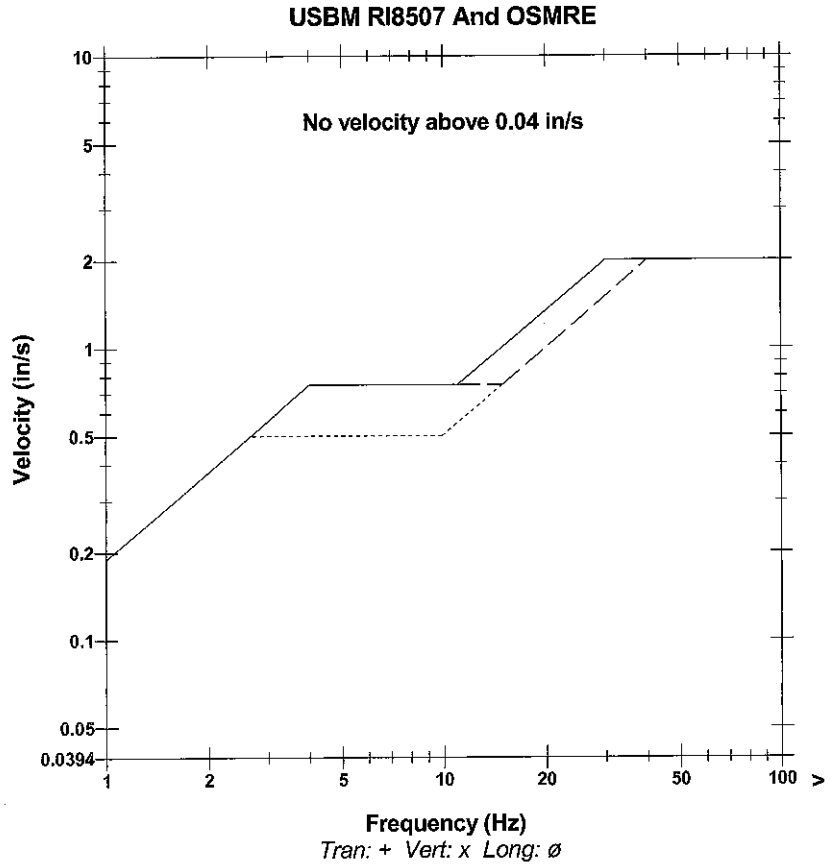
Serial Number BE17093 V 10.06-8.17 MiniMate Plus
 Battery Level 6.5 Volts
 Unit Calibration May 13, 2011 by InstanTel
 File Name S093DXQ9.I30

Notes

Client: PXP
 Project: VIC 1 330
 Location: Inglewood Field - Los Angeles, CA
 User: MMC, Inc. - Mark Burgus

Extended Notes:

	Tran	Vert	Long	
PPV	0.00375	0.00375	0.00500	in/s
ZC Freq	12	15	10	Hz
Time (Rel. to Trig)	-0.106	0.381	0.000	sec
Peak Acceleration	0.00663	0.00829	0.00829	g
Peak Displacement	0.00005	0.00004	0.00007	in
Sensor Check	Passed	Passed	Passed	
Frequency	7.5	7.5	7.5	Hz
Overswing Ratio	3.6	3.5	3.5	



Time Scale: 0.20 sec/div Amplitude Scale: Geo: 0.01000 in/s/div
 Trigger =

Sensor Check

Date/Time Long at 15:00:17 September 15, 2011
Trigger Source Geo: 0.00500 in/s
Range Geo: 1.25 in/s
Record Time 5.0 sec at 1024 sps

Serial Number BE17093 V 10.06-8.17 MiniMate Plus
Battery Level 6.5 Volts
Unit Calibration May 13, 2011 by InstanTel
File Name S093DXQ9.OH0

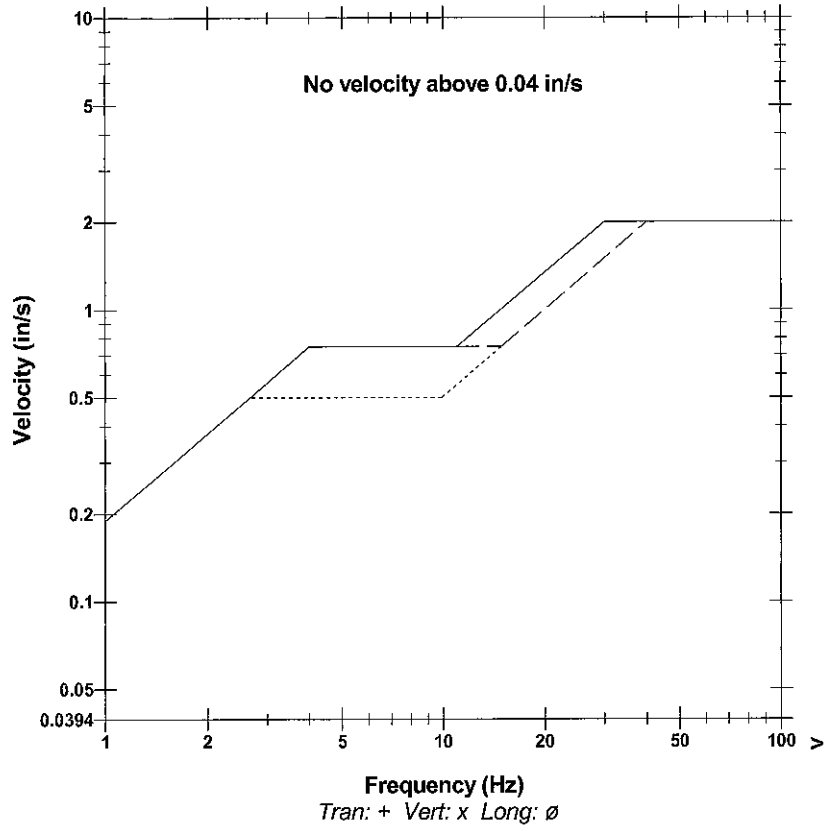
Notes

Client: PXP
Project: VIC 1 330
Location: Inglewood Field - Los Angeles, CA
User: MMC, Inc. - Mark Burgus

Extended Notes:

	Tran	Vert	Long	
PPV	0.00437	0.00375	0.00562	in/s
ZC Freq	14	17	10	Hz
Time (Rel. to Trig)	3.326	0.505	1.775	sec
Peak Acceleration	0.00829	0.00663	0.00663	g
Peak Displacement	0.00004	0.00004	0.00008	in
Sensor Check	Passed	Passed	Passed	
Frequency	7.5	7.5	7.5	Hz
Overswing Ratio	3.6	3.5	3.5	

USBM RI8507 And OSMRE



Time Scale: 0.20 sec/div **Amplitude Scale:** Geo: 0.01000 in/s/div
Trigger =

Sensor Check

Date/Time Long at 15:00:34 September 15, 2011
 Trigger Source Geo: 0.00500 in/s
 Range Geo: 1.25 in/s
 Record Time 5.0 sec at 1024 sps

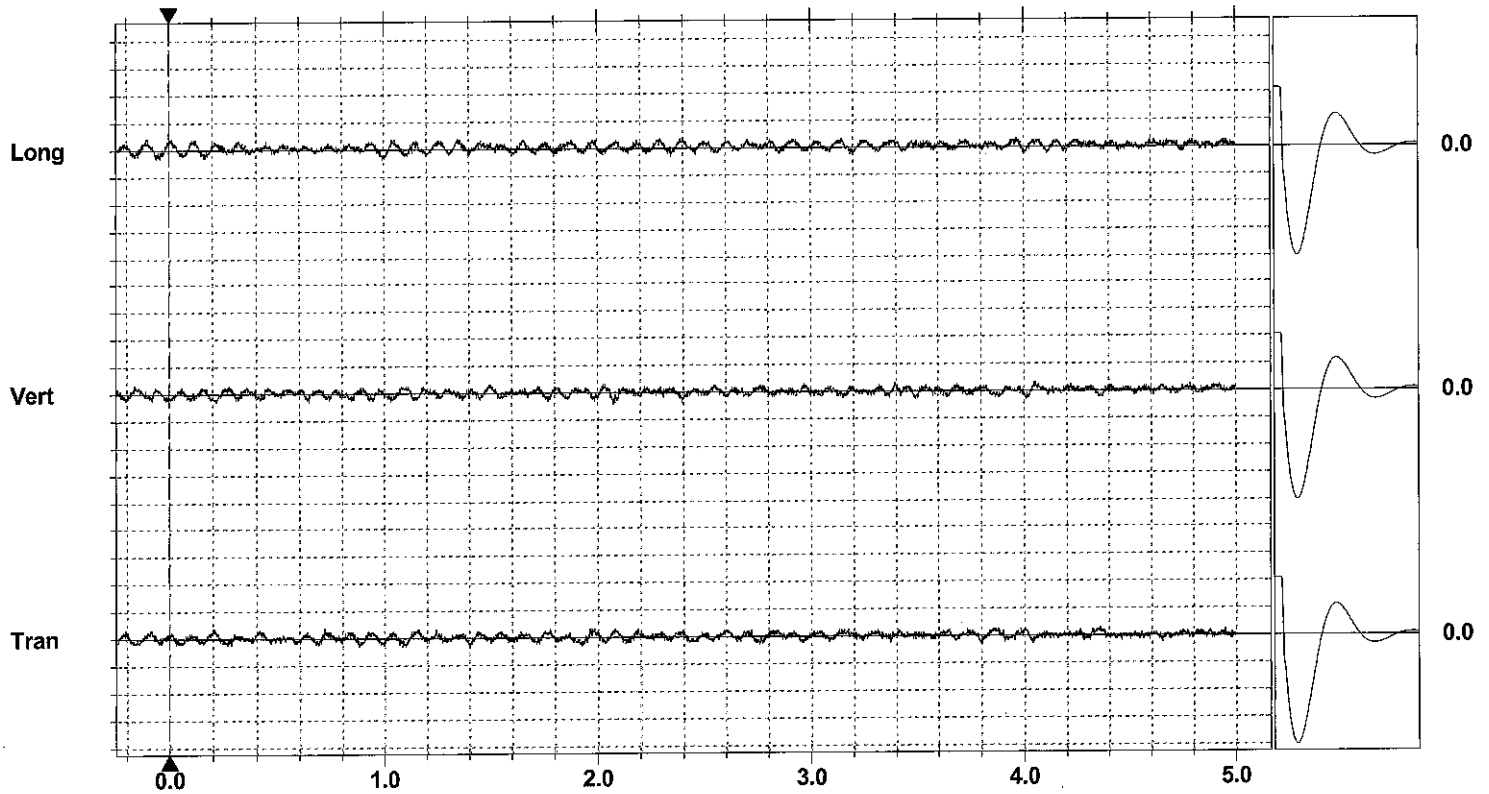
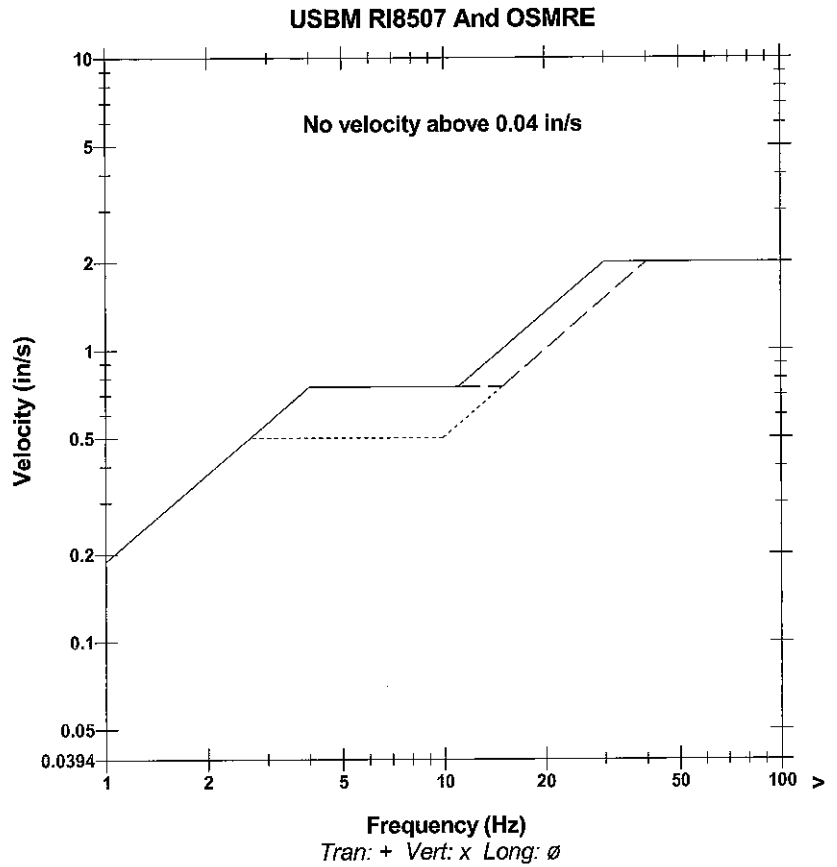
Serial Number BE17093 V 10.06-8.17 MiniMate Plus
 Battery Level 6.5 Volts
 Unit Calibration May 13, 2011 by InstanTel
 File Name S093DXQ9.OY0

Notes

Client: PXP
 Project: VIC 1 330
 Location: Inglewood Field - Los Angeles, CA
 User: MMC, Inc. - Mark Burgus

Extended Notes:

	Tran	Vert	Long	
PPV	0.00375	0.00437	0.00500	in/s
ZC Freq	13	23	11	Hz
Time (Rel. to Trig)	0.202	2.076	0.000	sec
Peak Acceleration	0.00829	0.00829	0.00663	g
Peak Displacement	0.00004	0.00004	0.00006	in
Sensor Check	Passed	Passed	Passed	
Frequency	7.5	7.5	7.5	Hz
Overswing Ratio	3.6	3.5	3.5	



Time Scale: 0.20 sec/div Amplitude Scale: Geo: 0.01000 in/s/div
 Trigger =

Sensor Check

Date/Time Long at 15:27:53 September 15, 2011
 Trigger Source Geo: 0.00500 in/s
 Range Geo: 1.25 in/s
 Record Time 5.0 sec at 1024 sps

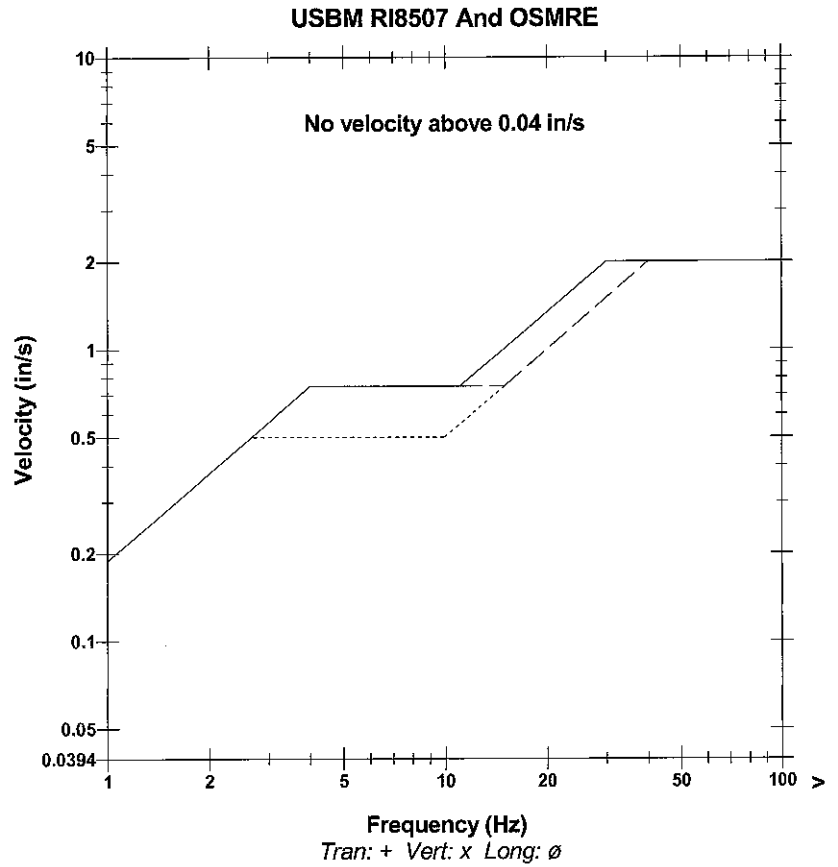
Serial Number BE17093 V 10.06-8.17 MiniMate Plus
 Battery Level 6.5 Volts
 Unit Calibration May 13, 2011 by InstanTel
 File Name S093DXQA.YH0

Notes

Client: PXP
 Project: VIC 1 330
 Location: Inglewood Field - Los Angeles, CA
 User: MMC, Inc. - Mark Burgus

Extended Notes:

	Tran	Vert	Long	
PPV	0.00500	0.00312	0.00562	in/s
ZC Freq	10	51	8.8	Hz
Time (Rel. to Trig)	0.386	0.098	0.003	sec
Peak Acceleration	0.00663	0.00663	0.00663	g
Peak Displacement	0.00007	0.00002	0.00011	in
Sensor Check	Passed	Passed	Passed	
Frequency	7.5	7.5	7.5	Hz
Overswing Ratio	3.6	3.5	3.5	



Time Scale: 0.20 sec/div Amplitude Scale: Geo: 0.01000 in/s/div
 Trigger =

Sensor Check

Date/Time Tran at 16:54:54 September 15, 2011
Trigger Source Geo: 0.00500 in/s
Range Geo: 1.25 in/s
Record Time 5.0 sec at 1024 sps

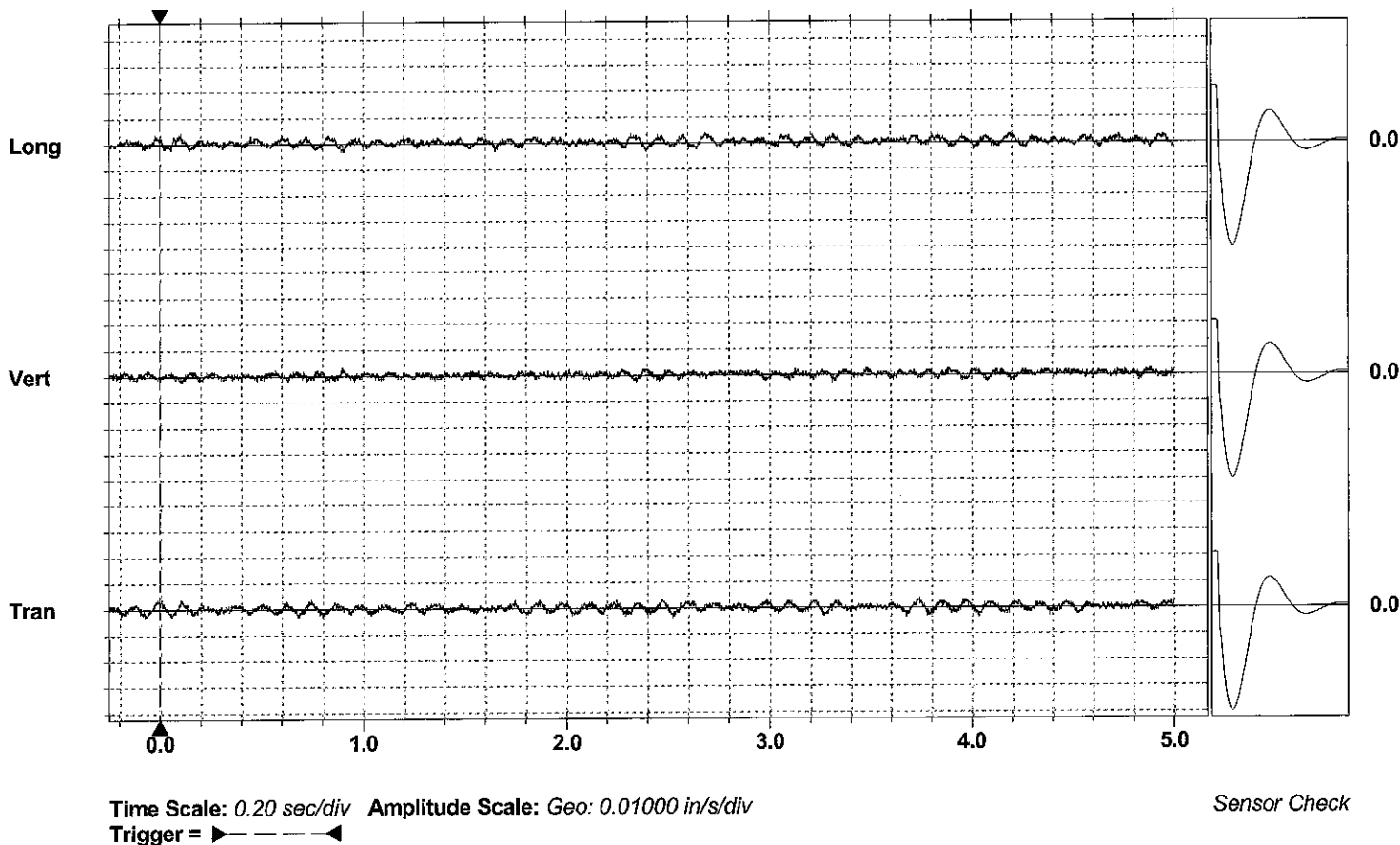
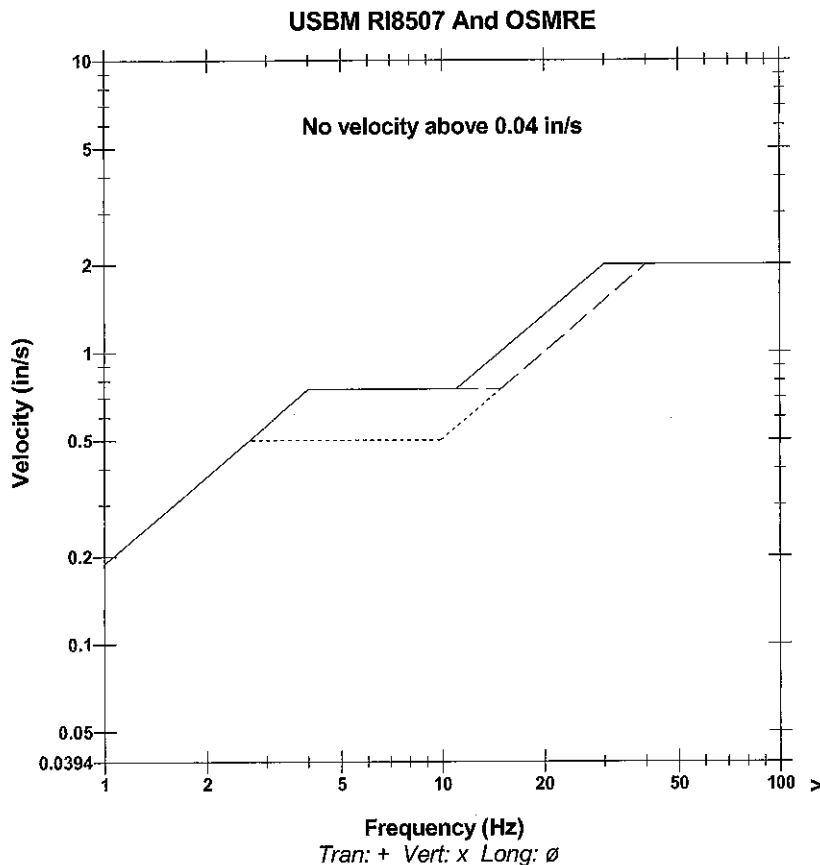
Serial Number BE17093 V 10.06-8.17 MiniMate Plus
Battery Level 6.5 Volts
Unit Calibration May 13, 2011 by InstanTel
File Name S093DXQE.Z10

Notes

Client: PXP
Project: VIC 1 330
Location: Inglewood Field - Los Angeles, CA
User: MMC, Inc. - Mark Burgus

Extended Notes:

	Tran	Vert	Long	
PPV	0.00500	0.00312	0.00437	in/s
ZC Freq	12	22	17	Hz
Time (Rel. to Trig)	0.000	0.898	0.104	sec
Peak Acceleration	0.00663	0.00829	0.00663	g
Peak Displacement	0.00005	0.00003	0.00006	in
Sensor Check	Passed	Passed	Passed	
Frequency	7.5	7.5	7.5	Hz
Overswing Ratio	3.6	3.5	3.5	



Date/Time Tran at 16:58:23 September 15, 2011
Trigger Source Geo: 0.00500 in/s
Range Geo: 1.25 in/s
Record Time 5.0 sec at 1024 sps

Serial Number BE17093 V 10.06-8.17 MiniMate Plus
Battery Level 6.5 Volts
Unit Calibration May 13, 2011 by InstanTel
File Name S093DXQF.5B0

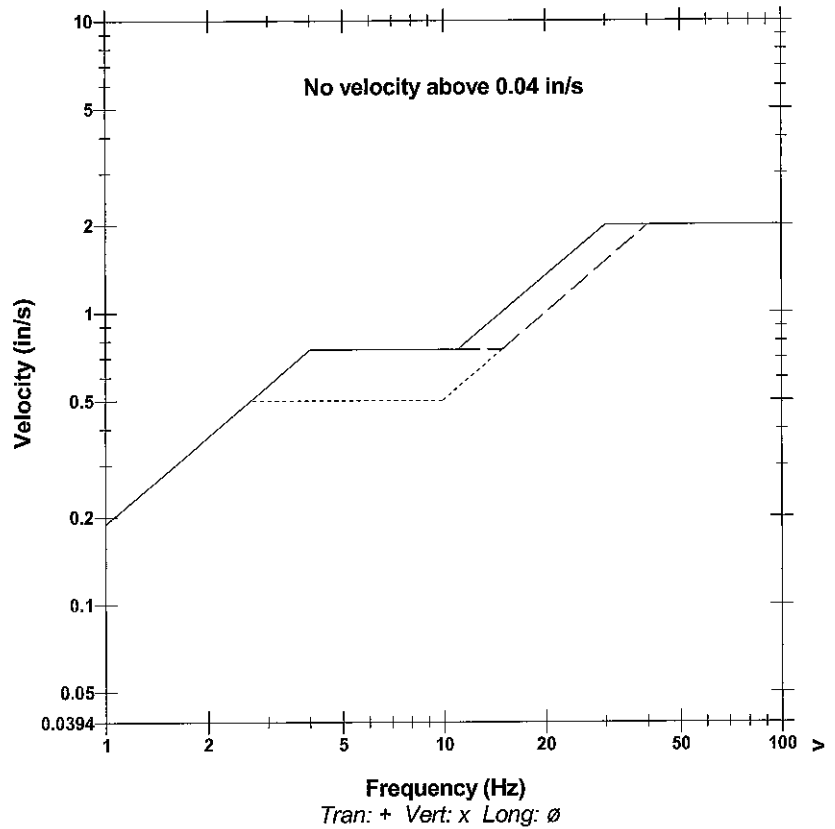
Notes

Client: PXP
Project: VIC 1 330
Location: Inglewood Field - Los Angeles, CA
User: MMC, Inc. - Mark Burgus

Extended Notes:

	Tran	Vert	Long	
PPV	0.00500	0.00375	0.00437	in/s
ZC Freq	10	18	11	Hz
Time (Rel. to Trig)	0.000	0.034	0.092	sec
Peak Acceleration	0.00663	0.00663	0.00663	g
Peak Displacement	0.00007	0.00004	0.00007	in
Sensor Check	Passed	Passed	Passed	
Frequency	7.5	7.5	7.5	Hz
Overswing Ratio	3.6	3.5	3.5	

USBM RI8507 And OSMRE



Time Scale: 0.20 sec/div **Amplitude Scale:** Geo: 0.01000 in/s/div
Trigger =

Sensor Check

Date/Time Tran at 17:00:05 September 15, 2011
Trigger Source Geo: 0.00500 in/s
Range Geo: 1.25 in/s
Record Time 5.0 sec at 1024 sps

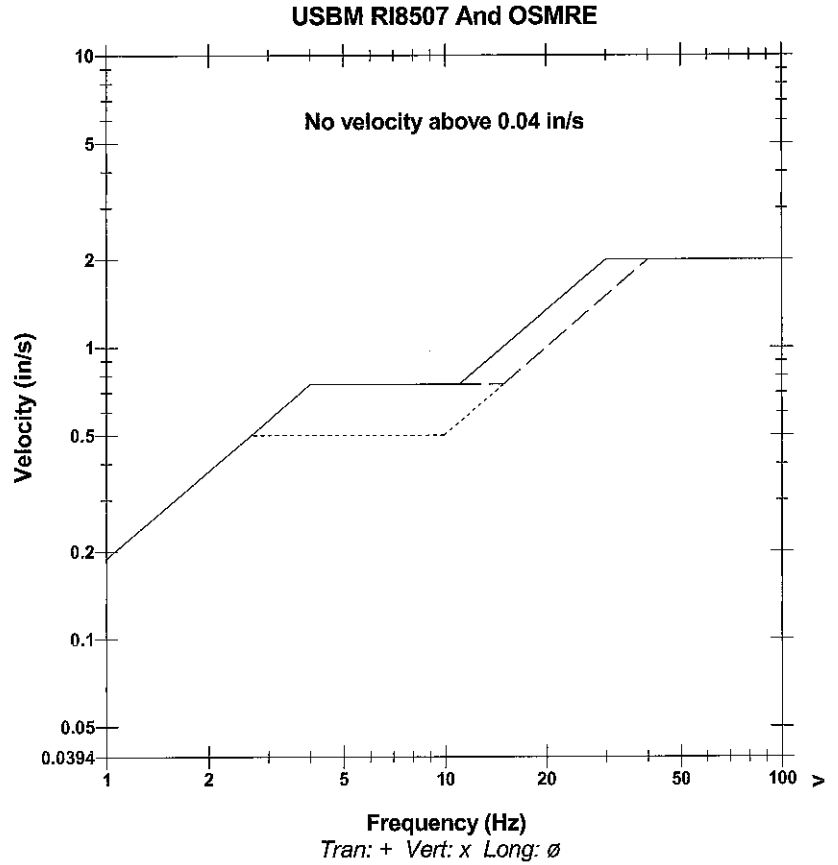
Serial Number BE17093 V 10.06-8.17 MiniMate Plus
Battery Level 6.5 Volts
Unit Calibration May 13, 2011 by InstanTel
File Name S093DXQF.850

Notes

Client: PXP
Project: VIC 1 330
Location: Inglewood Field - Los Angeles, CA
User: MMC, Inc. - Mark Burgus

Extended Notes:

	Tran	Vert	Long	
PPV	0.00500	0.00312	0.00375	in/s
ZC Freq	15	19	15	Hz
Time (Rel. to Trig)	0.000	-0.161	-0.158	sec
Peak Acceleration	0.00663	0.00829	0.00663	g
Peak Displacement	0.00006	0.00003	0.00004	in
Sensor Check	Passed	Passed	Passed	
Frequency	7.5	7.5	7.5	Hz
Overswing Ratio	3.6	3.5	3.5	



Time Scale: 0.20 sec/div **Amplitude Scale:** Geo: 0.01000 in/s/div
Trigger =

Sensor Check

Date/Time Tran at 17:00:18 September 15, 2011
Trigger Source Geo: 0.00500 in/s
Range Geo: 1.25 in/s
Record Time 5.0 sec at 1024 sps

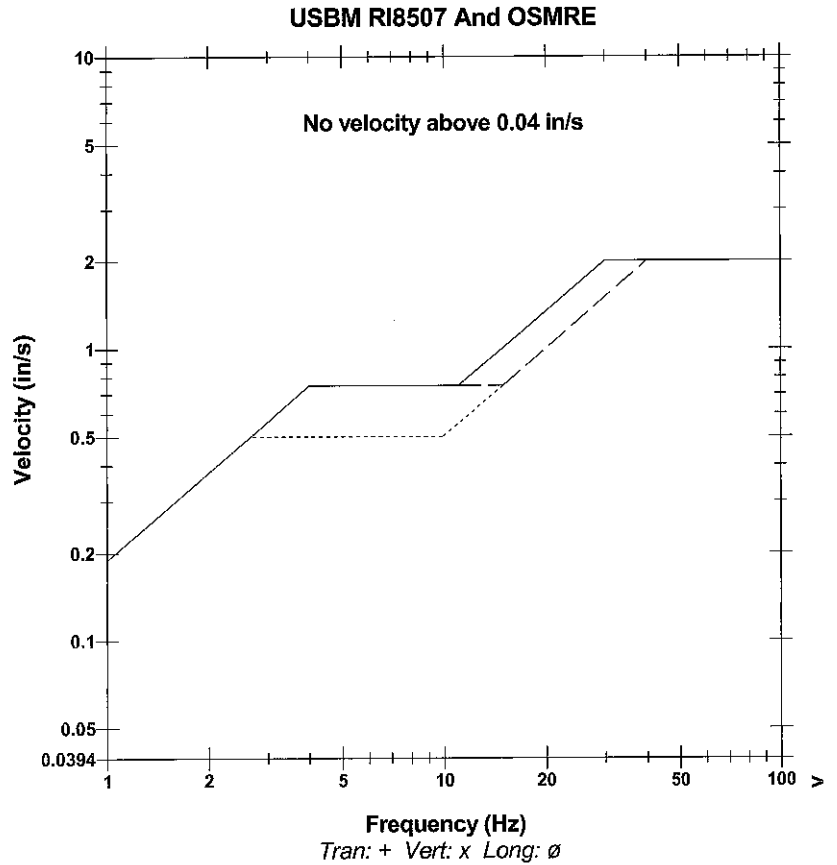
Serial Number BE17093 V 10.06-8.17 MiniMate Plus
Battery Level 6.5 Volts
Unit Calibration May 13, 2011 by InstanTel
File Name S093DXQF.810

Notes

Client: PXP
Project: VIC 1 330
Location: Inglewood Field - Los Angeles, CA
User: MMC, Inc. - Mark Burgus

Extended Notes:

	Tran	Vert	Long	
PPV	0.00500	0.00312	0.00312	in/s
ZC Freq	12	15	23	Hz
Time (Rel. to Trig)	0.000	-0.001	-0.061	sec
Peak Acceleration	0.00663	0.00663	0.00663	g
Peak Displacement	0.00006	0.00003	0.00003	in
Sensor Check	Passed	Passed	Passed	
Frequency	7.5	7.5	7.5	Hz
Overswing Ratio	3.6	3.5	3.5	



Time Scale: 0.20 sec/div **Amplitude Scale:** Geo: 0.01000 in/s/div
Trigger =

Sensor Check

Date/Time Tran at 17:00:34 September 15, 2011
Trigger Source Geo: 0.00500 in/s
Range Geo: 1.25 in/s
Record Time 5.0 sec at 1024 sps

Serial Number BE17093 V 10.06-8.17 MiniMate Plus
Battery Level 6.5 Volts
Unit Calibration May 13, 2011 by InstanTEL
File Name S093DXQF.8Y0

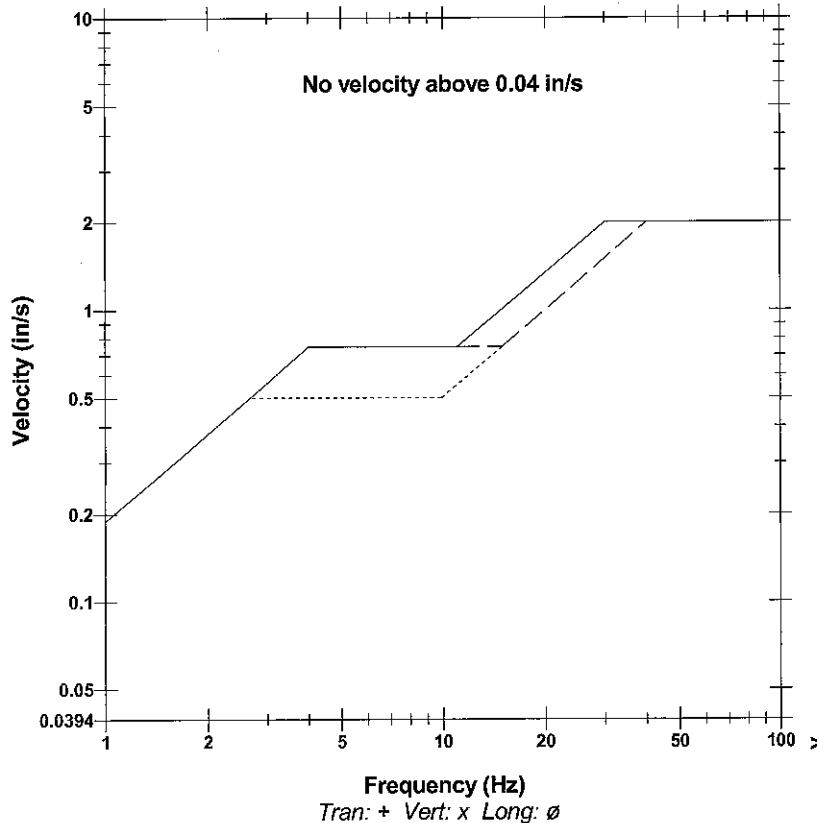
Notes

Client: PXP
Project: VIC 1 330
Location: Inglewood Field - Los Angeles, CA
User: MMC, Inc. - Mark Burgus

Extended Notes:

	Tran	Vert	Long	
PPV	0.00500	0.00375	0.00375	in/s
ZC Freq	10	27	17	Hz
Time (Rel. to Trig)	0.000	0.472	0.008	sec
Peak Acceleration	0.00663	0.00663	0.00663	g
Peak Displacement	0.00007	0.00003	0.00004	in
Sensor Check	Passed	Passed	Passed	
Frequency	7.5	7.5	7.5	Hz
Overswing Ratio	3.6	3.5	3.5	

USBM RI8507 And OSMRE



Time Scale: 0.20 sec/div **Amplitude Scale:** Geo: 0.01000 in/s/div
Trigger =

Sensor Check

Date/Time *Tran at 17:00:39 September 15, 2011*
 Trigger Source *Geo: 0.00500 in/s*
 Range *Geo: 1.25 in/s*
 Record Time *5.0 sec at 1024 sps*

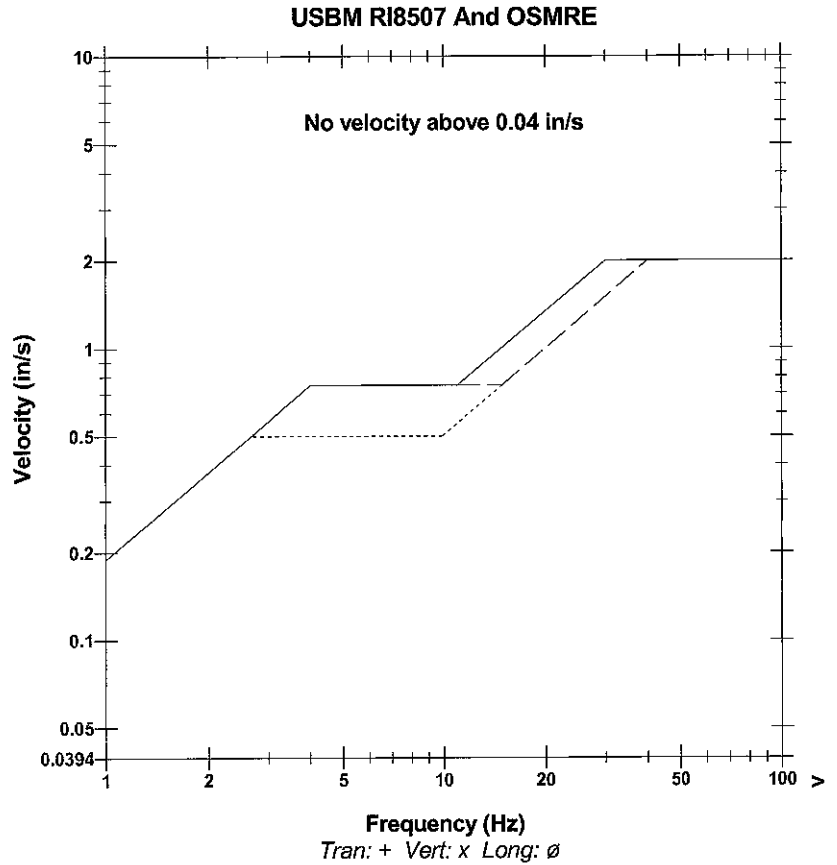
Serial Number *BE17093 V 10.06-8.17 MiniMate Plus*
 Battery Level *6.5 Volts*
 Unit Calibration *May 13, 2011 by InstanTel*
 File Name *S093DXQF.930*

Notes

Client: *PXP*
 Project: *VIC 1 330*
 Location: *Inglewood Field - Los Angeles, CA*
 User: *MMC, Inc. - Mark Burgus*

Extended Notes:

	Tran	Vert	Long	
PPV	0.00500	0.00375	0.00375	in/s
ZC Freq	12	18	19	Hz
Time (Rel. to Trig)	0.000	2.734	0.745	sec
Peak Acceleration	0.00829	0.00663	0.00663	g
Peak Displacement	0.00009	0.00003	0.00004	in
Sensor Check	Passed	Passed	Passed	
Frequency	7.5	7.5	7.5	Hz
Overswing Ratio	3.6	3.5	3.5	



Time Scale: 0.20 sec/div Amplitude Scale: Geo: 0.01000 in/s/div
 Trigger =

Sensor Check

Date/Time *Tran at 17:00:45 September 15, 2011*
 Trigger Source *Geo: 0.00500 in/s*
 Range *Geo: 1.25 in/s*
 Record Time *5.0 sec at 1024 sps*

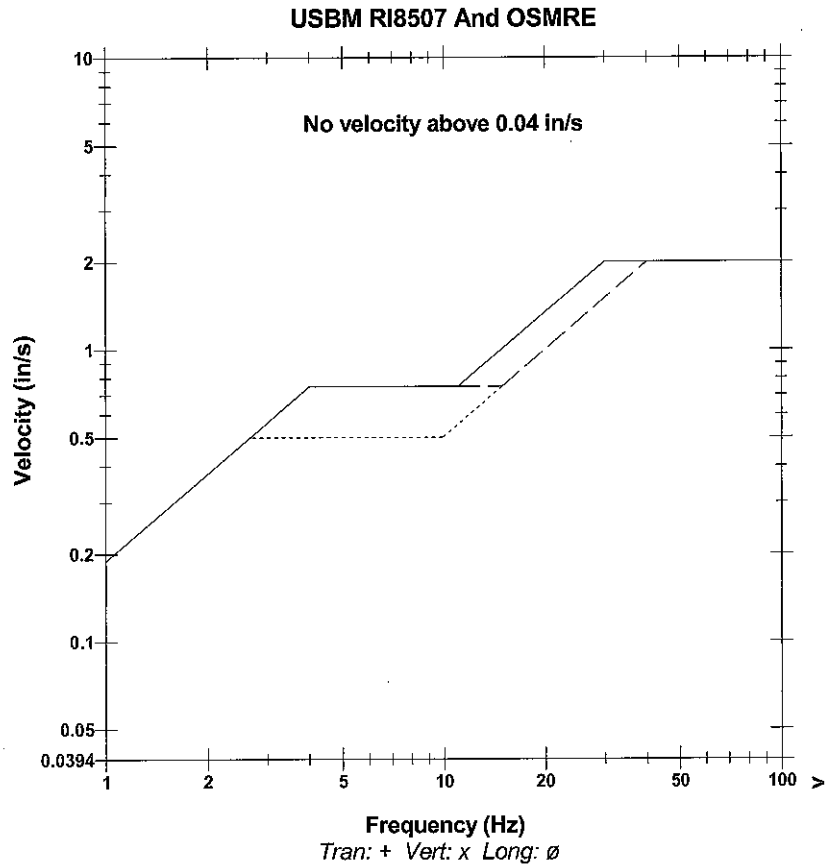
Serial Number *BE17093 V 10.06-8.17 MiniMate Plus*
 Battery Level *6.5 Volts*
 Unit Calibration *May 13, 2011 by InstanTel*
 File Name *S093DXQF.990*

Notes

Client: *PXP*
 Project: *VIC 1 330*
 Location: *Inglewood Field - Los Angeles, CA*
 User: *MMC, Inc. - Mark Burgus*

Extended Notes:

	Tran	Vert	Long	
PPV	0.00625	0.00375	0.00375	in/s
ZC Freq	11	19	17	Hz
Time (Rel. to Trig)	0.003	-0.006	-0.123	sec
Peak Acceleration	0.00829	0.00663	0.00663	g
Peak Displacement	0.00008	0.00004	0.00005	in
Sensor Check	Passed	Passed	Passed	
Frequency	7.5	7.5	7.5	Hz
Overswing Ratio	3.6	3.5	3.5	



Time Scale: 0.20 sec/div Amplitude Scale: Geo: 0.01000 in/s/div
 Trigger =

Sensor Check

Date/Time Tran at 17:00:50 September 15, 2011
Trigger Source Geo: 0.00500 in/s
Range Geo: 1.25 in/s
Record Time 5.0 sec at 1024 sps

Serial Number BE17093 V 10.06-8.17 MiniMate Plus
Battery Level 6.4 Volts
Unit Calibration May 13, 2011 by InstanTel
File Name S093DXQF.9E0

Notes

Client: PXP
Project: VIC 1 330
Location: Inglewood Field - Los Angeles, CA
User: MMC, Inc. - Mark Burgus

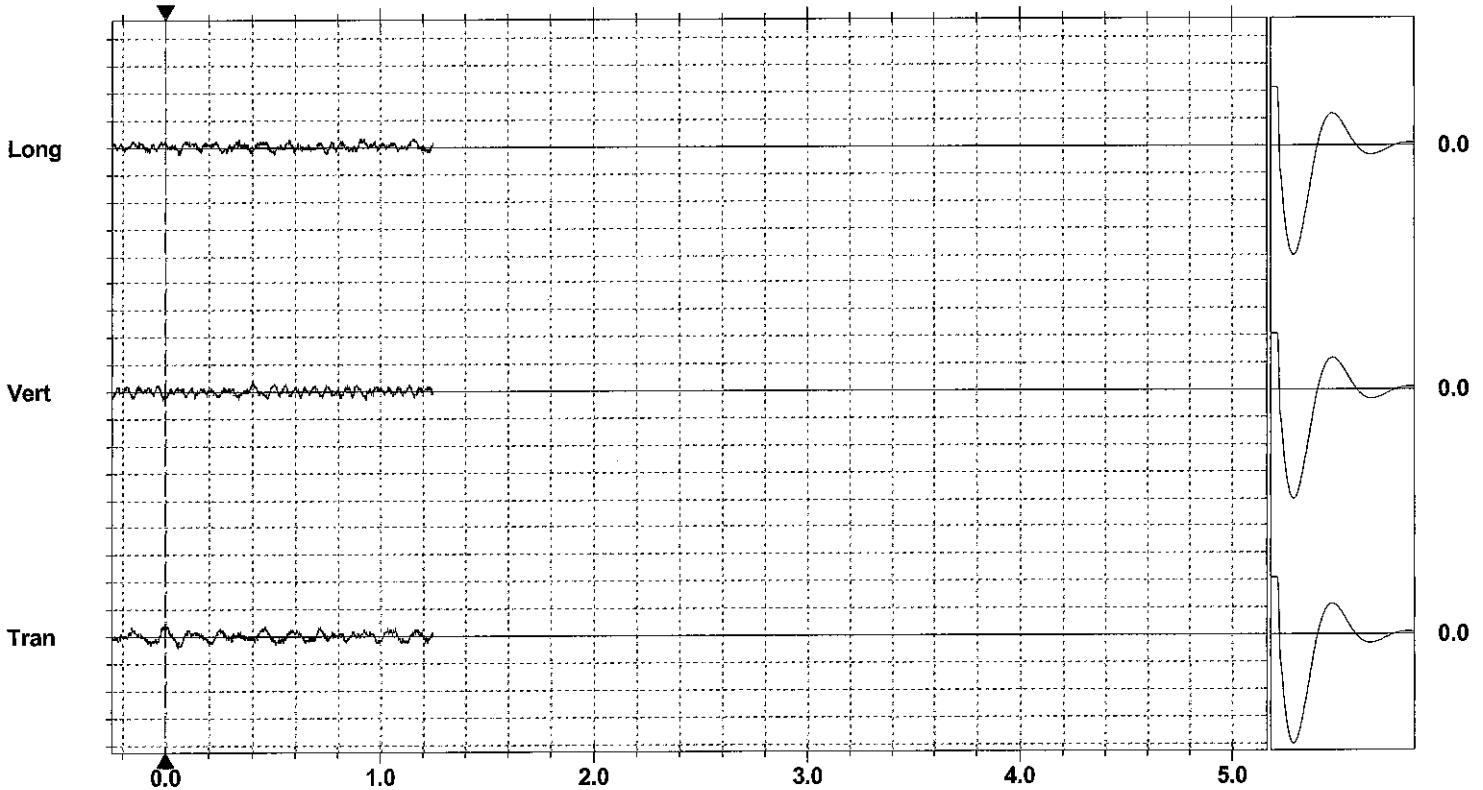
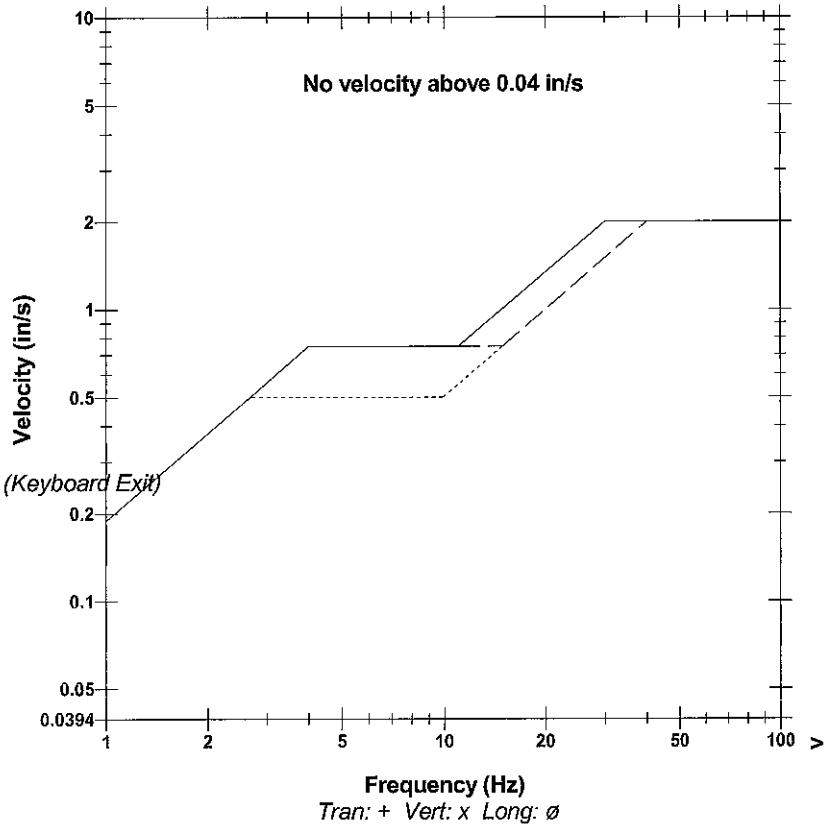
Extended Notes:

	Tran	Vert	Long	
PPV	0.00500	0.00375	0.00312	in/s
ZC Freq	12	15	64	Hz
Time (Rel. to Trig)	0.000	0.402	0.339	sec
Peak Acceleration	0.00497	0.00829	0.00663	g
Peak Displacement	0.00006	0.00003	0.00004	in
Sensor Check	Passed	Passed	Passed	
Frequency	7.5	7.5	7.5	Hz
Overswing Ratio	3.6	3.5	3.5	

Monitor Log

Sep 15/11 17:00:50 Sep 15/11 17:00:52 Event recorded. (Keyboard Exit)

USBM RI8507 And OSMRE



Time Scale: 0.20 sec/div **Amplitude Scale:** Geo: 0.01000 in/s/div
Trigger =

Sensor Check

Date/Time Tran at 17:09:29 September 15, 2011
Trigger Source Geo: 0.00500 in/s
Range Geo: 1.25 in/s
Record Time 5.0 sec at 1024 sps

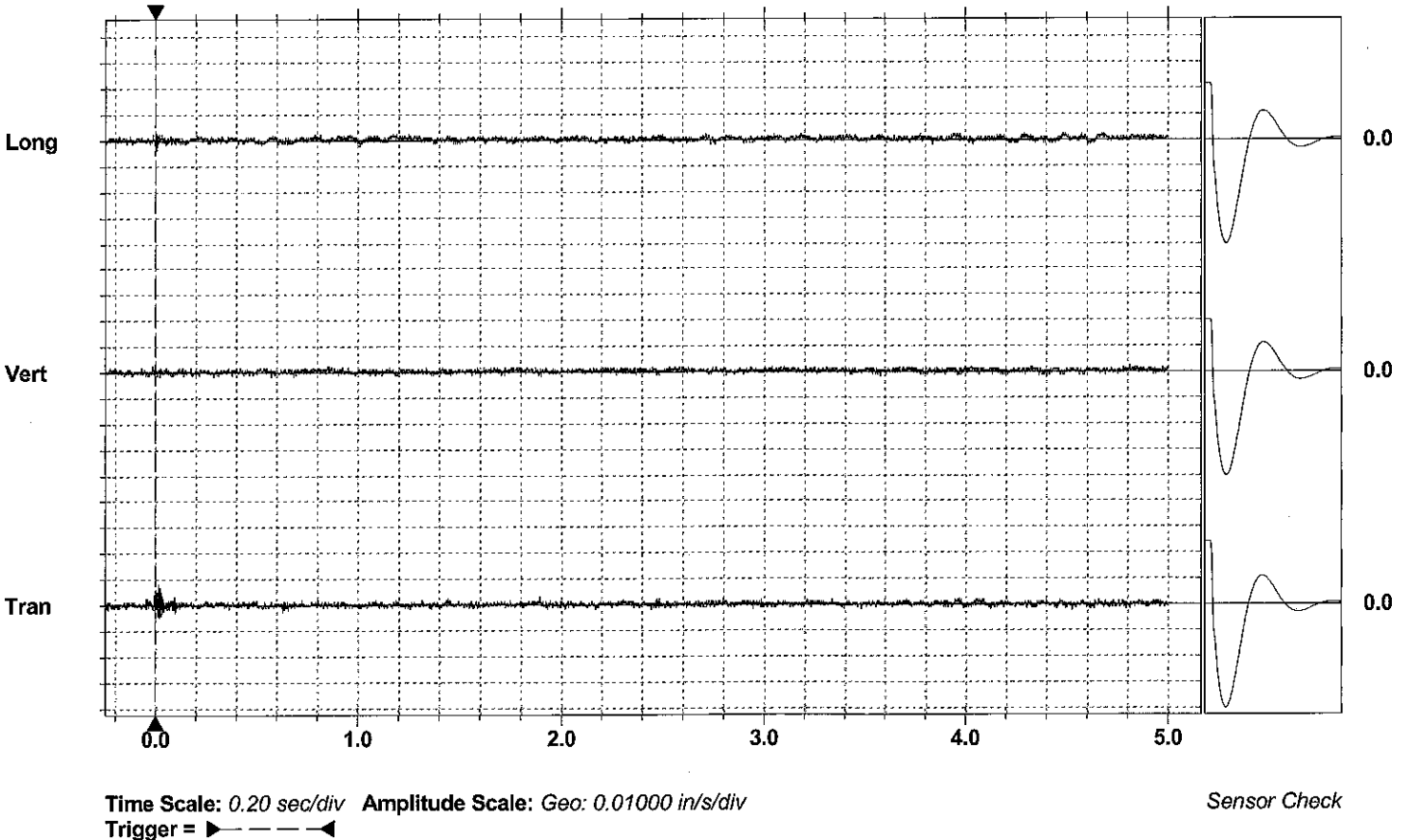
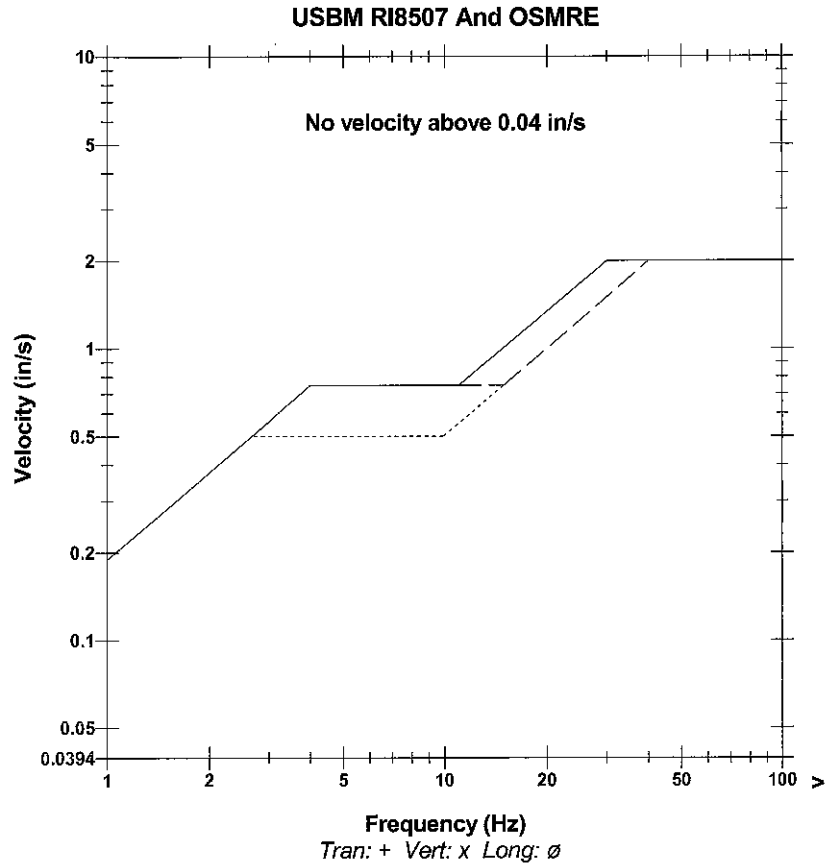
Serial Number BE17093 V 10.06-8.17 MiniMate Plus
Battery Level 6.5 Volts
Unit Calibration May 13, 2011 by InstanTel
File Name S093DXQF.NT0

Notes

Client: PXP
Project: VIC 1 330
Location: Inglewood Field - Los Angeles, CA
User: MMC, Inc. - Mark Burgus

Extended Notes:

	Tran	Vert	Long	
PPV	0.00812	0.00250	0.00375	in/s
ZC Freq	>100	85	>100	Hz
Time (Rel. to Trig)	0.018	-0.013	0.008	sec
Peak Acceleration	0.0149	0.00663	0.00994	g
Peak Displacement	0.00001	0.00001	0.00002	in
Sensor Check	Passed	Passed	Passed	
Frequency	7.7	7.5	7.6	Hz
Overswing Ratio	3.7	3.6	3.6	



Date/Time Long at 17:19:11 September 15, 2011
 Trigger Source Geo: 0.00500 in/s
 Range Geo: 1.25 in/s
 Record Time 5.0 sec at 1024 sps

Serial Number BE17093 V 10.06-8.17 MiniMate Plus
 Battery Level 6.5 Volts
 Unit Calibration May 13, 2011 by InstanTEL
 File Name S093DXQG.3Z0

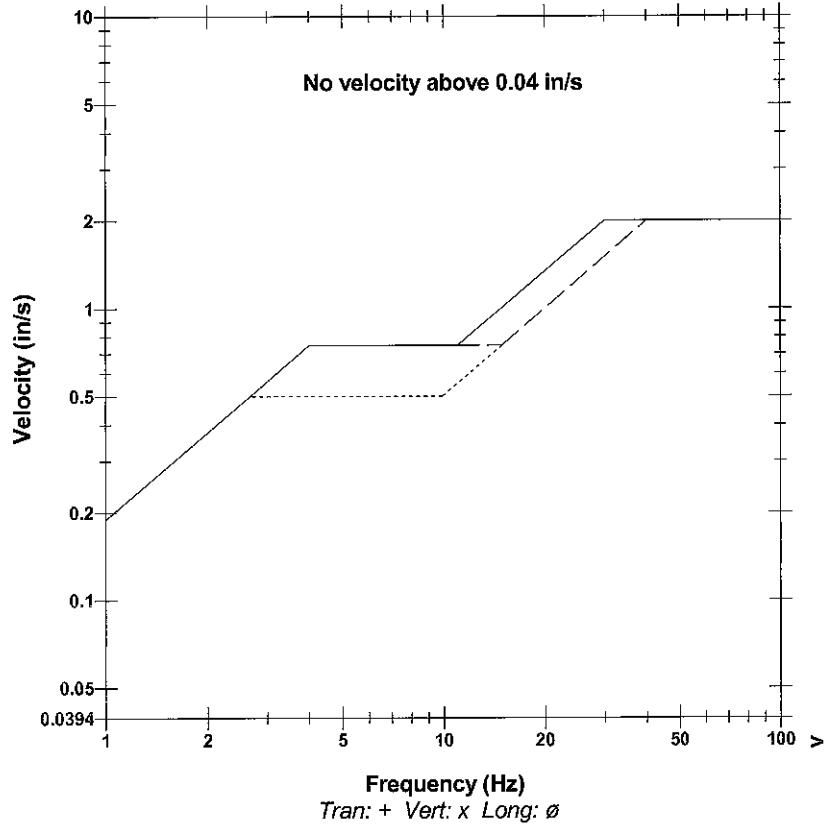
Notes

Client: PXP
 Project: VIC 1 330
 Location: Inglewood Field - Los Angeles, CA
 User: MMC, Inc. - Mark Burgus

Extended Notes:

	Tran	Vert	Long	
PPV	0.00375	0.00375	0.00500	in/s
ZC Freq	21	13	14	Hz
Time (Rel. to Trig)	1.659	-0.111	0.000	sec
Peak Acceleration	0.00663	0.00663	0.00829	g
Peak Displacement	0.00003	0.00005	0.00005	in
Sensor Check	Passed	Passed	Passed	
Frequency	7.7	7.5	7.6	Hz
Overswing Ratio	3.7	3.6	3.6	

USBM RI8507 And OSMRE



Time Scale: 0.20 sec/div Amplitude Scale: Geo: 0.01000 in/s/div
 Trigger =

Sensor Check