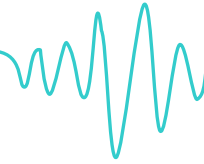


Behrens and Associates, Inc.

Acoustics, Noise and Vibration Consultants



January 25, 2012
Plains Exploration & Production
201 South Broadway
Orcutt, CA 93455

Attention: Gary Hertfelder, Rob Emslie

Subject: Well TVIC-221 High Rate Gravel Pack Operation Ground-Borne Vibration Level
and Sound Level Survey Report

Gentlemen,

Please find the attached results of the gravel pack operation ground-borne vibration and sound level measurement program which was completed at the PXP Inglewood Field in California on January 10, 2012. The ground-borne vibration levels were measured at a distance of 50, 100, 200, and 300 feet to the east of the high rate gravel pack operation site. The ground-borne vibration survey was completed while all associated equipment was operating under normal loads and conditions. The attached map and equipment layout show the measurement locations and surrounding area.

The ground-borne vibration level measurements were performed with a Profound VM Vibration Monitoring System which was programmed to continuously measure and record the vertical ground-borne vibration peak particle velocity (ppv) levels in three-second intervals.

The measured peak particle velocity (ppv) vibration levels are reported in inches per second (ips) in the vertical direction. The results of the vibration level measurements are displayed in the attached graph. The maximum measured ground-borne vibration levels at 300 feet from the gravel pack operation are shown in the attached human and structural sensitivity graphs.

A Bruel & Kjaer Type 1 2250 Hand-held Analyzers sound level meter was calibrated and programmed to measure and calculate the equivalent sound level (L_{eq}) for the gravel pack operation sound level survey. Approximately nine minutes duration sound level measurements were conducted at 100 feet and 200 feet from the gravel pack operation. The measured noise level at 100 feet was measured 68.1 dBA and the noise level at 200 feet was 63.5 dBA. The measurement system microphone was positioned approximately 5 feet above the ground.

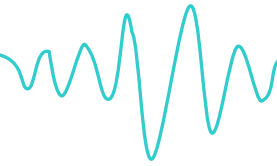
Please contact me with any questions or comments which may arise.

Very truly yours,

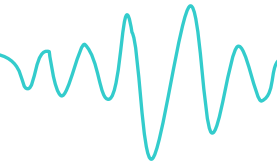
Don Behrens
President

Behrens and Associates, Inc.

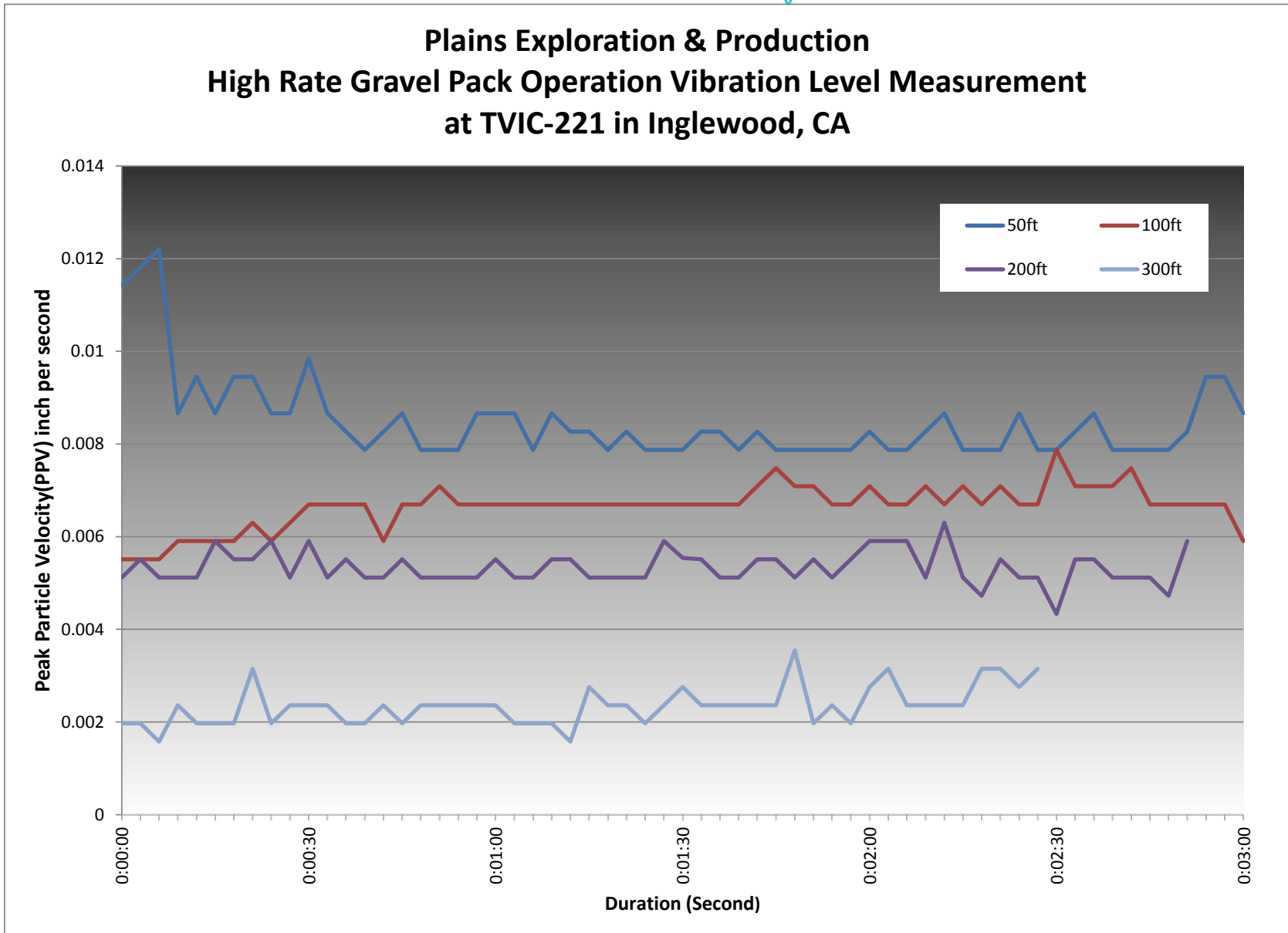
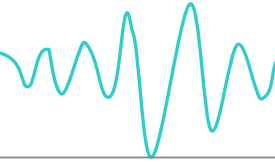
Acoustics, Noise and Vibration Consultants



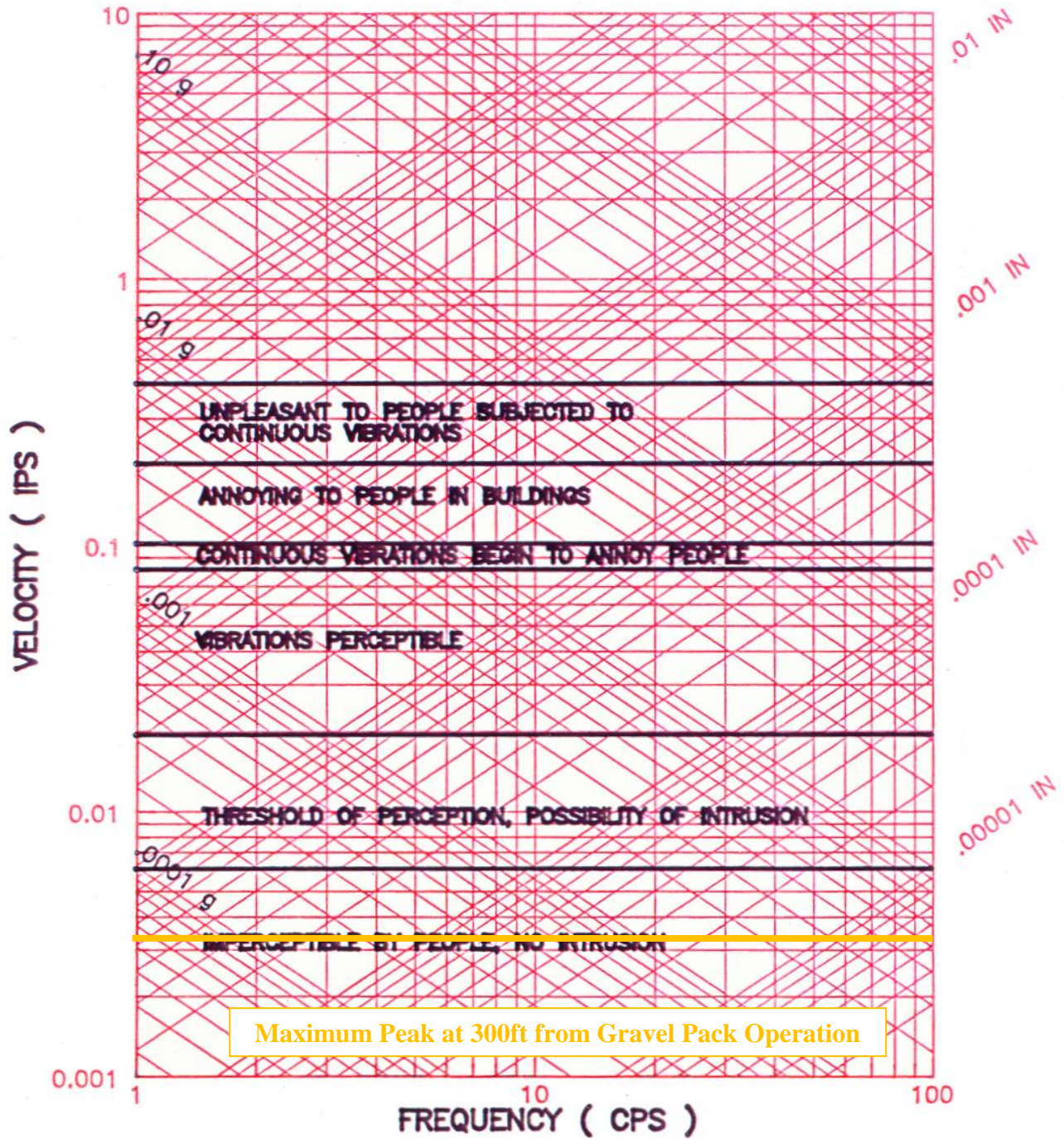
High Rate Gravel Pack Operation Equipment Layout at TVIC-221 site



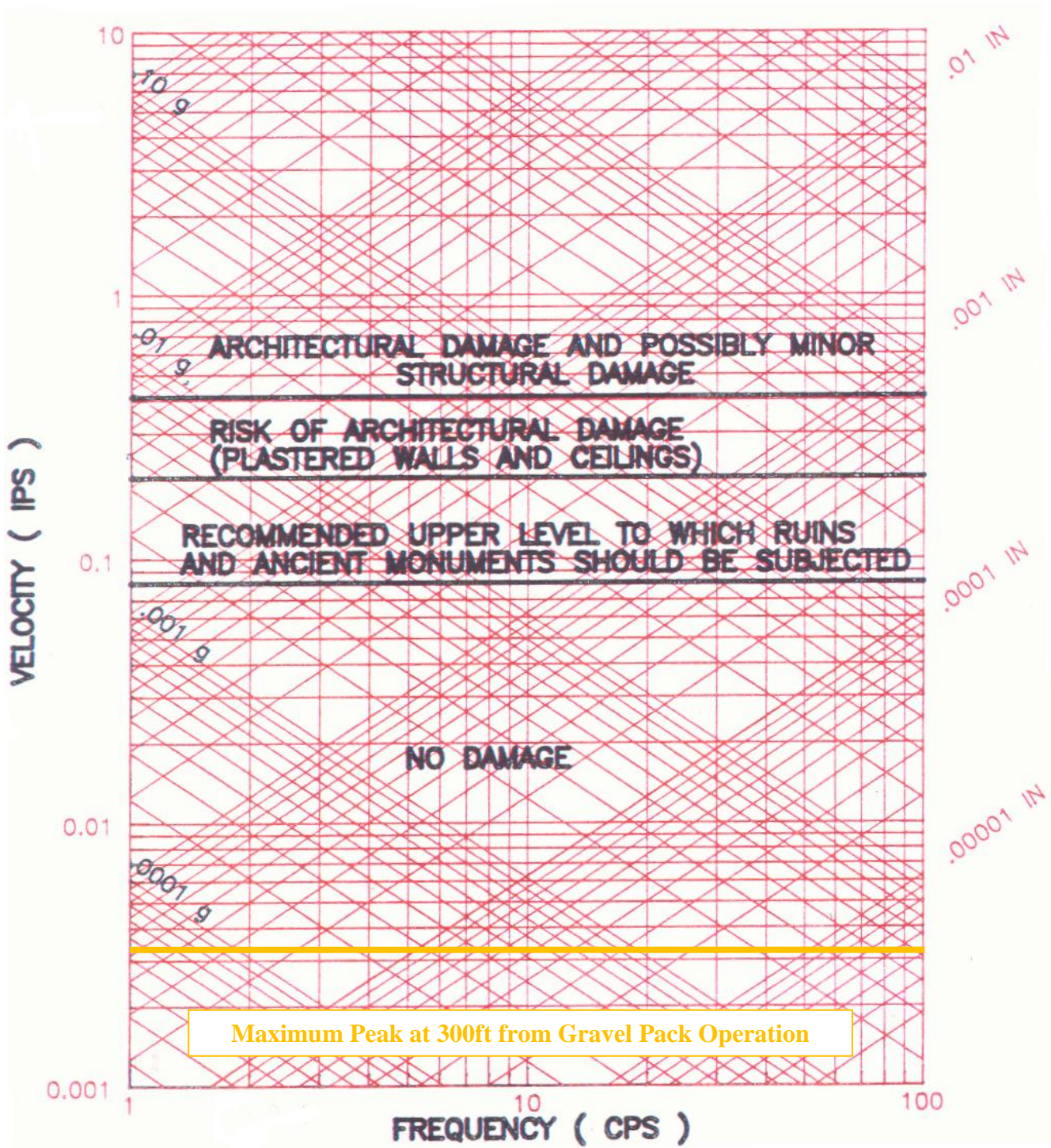
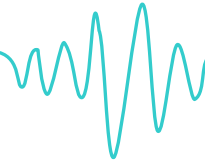
High Rate Gravel Pack Operation Vibration Measurement Direction at TVIC-221 site



Vibration Levels by Distances from High Rate Gravel Pack Operation Equipment at TVIC-221



Human Vibration Sensitivity Chart



Structural Vibration Sensitivity Chart